



[Go to Product page](#)

Datasheet for ABIN3028847
anti-MLKL antibody (AA 444-472)

5 Images

Overview

Quantity:	0.2 mL
Target:	MLKL
Binding Specificity:	AA 444-472
Reactivity:	Mouse
Host:	Rabbit
Clonality:	Polyclonal
Conjugate:	This MLKL antibody is un-conjugated
Application:	Western Blotting (WB), ELISA

Product Details

Immunogen:	A portion of amino acids 444-472 from the mouse protein was used as the immunogen for this MLKL antibody.
Isotype:	Ig Fraction
Purification:	Antigen affinity purified

Target Details

Target:	MLKL
Alternative Name:	MIK1 (MLKL Products)
Background:	The protein kinase domain is predicted to be catalytically inactive. Molecular function: protein binding. There are two isoforms.

Target Details

UniProt: [Q9D2Y4](#)

Application Details

Application Notes: Titration of the Mkl1 antibody may be required due to differences in protocols and secondary/substrate sensitivity.\. Western blot: 1:1000

Restrictions: For Research Use only

Handling

Format: Liquid

Buffer: In 1X PBS pH 7.4 with 0.09 % sodium azide

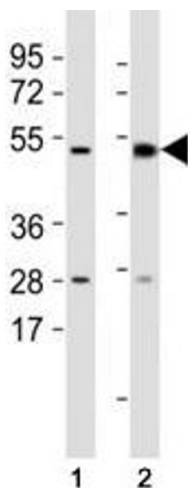
Preservative: Sodium azide

Precaution of Use: This product contains Sodium azide: a POISONOUS AND HAZARDOUS SUBSTANCE which should be handled by trained staff only.

Storage: -20 °C

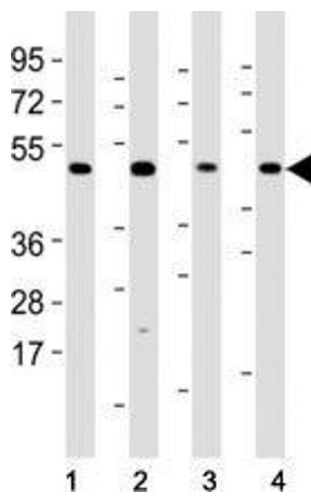
Storage Comment: Aliquot the Mkl1 antibody and store frozen at -20°C or colder. Avoid repeated freeze-thaw cycles.

Images



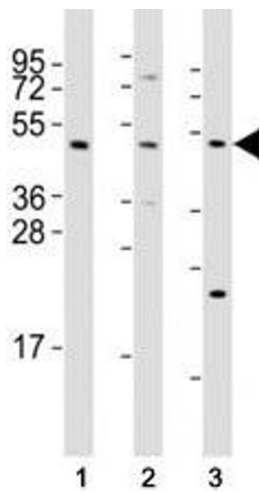
Western Blotting

Image 1. Western blot testing of Mkl1 antibody at 1:1000 dilution and mouse samples: (1) lung, (2) spleen lysate; Predicted size: 54 kDa.



Western Blotting

Image 2. Western blot testing of Mlkl antibody at 1:2000 dilution and mouse samples: (1) lung, (2) NIH3T3, (3) liver, (4) testis lysate; Predicted size: 54 kDa.



Western Blotting

Image 3. Western blot testing of Mlkl antibody at 1:2000 dilution and mouse samples: (1) testis, (2) liver, (3) NIH3T3 lysate; Predicted size: 54 kDa.

Please check the [product details page](#) for more images. Overall 5 images are available for ABIN3028847.