

Datasheet for ABIN3028848  
**anti-MUC15 antibody (AA 209-237)**[Go to Product page](#)

## 3 Images

## Overview

Quantity:	0.4 mL
Target:	MUC15
Binding Specificity:	AA 209-237
Reactivity:	Human
Host:	Rabbit
Clonality:	Polyclonal
Conjugate:	This MUC15 antibody is un-conjugated
Application:	Western Blotting (WB), Immunohistochemistry (IHC), ELISA

## Product Details

Immunogen:	A portion of amino acids 209-237 from the human protein was used as the immunogen for this MUC15 antibody.
Isotype:	Ig Fraction
Purification:	Antigen affinity purified

## Target Details

Target:	MUC15
Alternative Name:	MUC15 ( <a href="#">MUC15 Products</a> )
Background:	MUC15 may play a role in the cell adhesion to the extracellular matrix.
UniProt:	<a href="#">Q8N387</a>

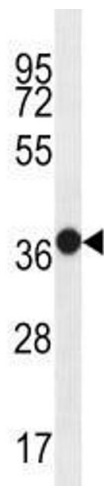
## Application Details

Application Notes:	Titration of the MUC15 antibody may be required due to differences in protocols and secondary/substrate sensitivity.\. Western blot: 1:1000,IHC (Paraffin): 1:10-1:50
Restrictions:	For Research Use only

## Handling

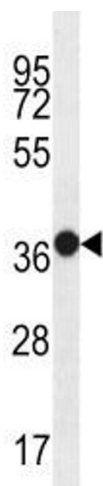
Format:	Liquid
Buffer:	In 1X PBS, pH 7.4, with 0.09 % sodium azide
Preservative:	Sodium azide
Precaution of Use:	This product contains Sodium azide: a POISONOUS AND HAZARDOUS SUBSTANCE which should be handled by trained staff only.
Storage:	-20 °C
Storage Comment:	Aliquot the MUC15 antibody and store frozen at -20°C or colder. Avoid repeated freeze-thaw cycles.

## Images



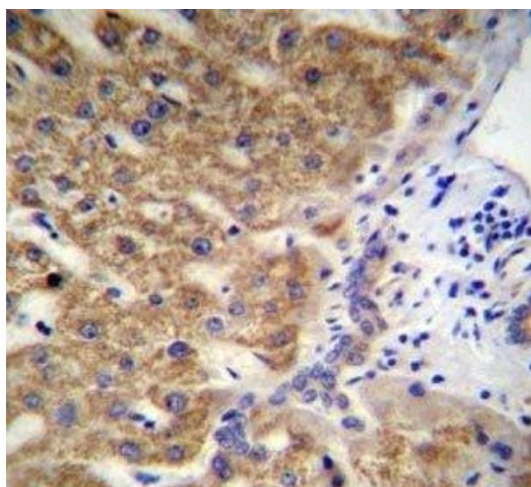
**Western Blotting**

**Image 1.** MUC15 antibody western blot analysis in WiDr lysate.



#### Western Blotting

**Image 2.** MUC15 antibody western blot analysis in WiDr lysate.



#### Immunohistochemistry

**Image 3.** MUC15 antibody immunohistochemistry analysis in formalin fixed and paraffin embedded human liver tissue.