

Datasheet for ABIN3028852  
**anti-MCFD2 antibody**



[Go to Product page](#)

2 Images

Overview

Quantity:	0.4 mL
Target:	MCFD2
Reactivity:	Human
Host:	Mouse
Clonality:	Monoclonal
Conjugate:	This MCFD2 antibody is un-conjugated
Application:	Western Blotting (WB), ELISA

Product Details

Immunogen:	This MCFD2 antibody was produced from a mouse immunized with MCFD2 recombinant protein.
Clone:	165CT13-1-6
Isotype:	IgG1 kappa
Purification:	Purified

Target Details

Target:	MCFD2
Alternative Name:	MCFD2 ( <a href="#">MCFD2 Products</a> )
Background:	The MCFD2-LMAN1 complex forms a specific cargo receptor for the ER-to-Golgi transport of selected proteins. Plays a role in the secretion of coagulation factors.

## Target Details

UniProt: [Q8NI22](#)

## Application Details

Application Notes: Titration of the MCFD2 antibody may be required due to differences in protocols and secondary/substrate sensitivity.\. Western blot: 1:100-1:500

Restrictions: For Research Use only

## Handling

Format: Liquid

Buffer: In 1X PBS pH 7.4 with 0.09 % sodium azide

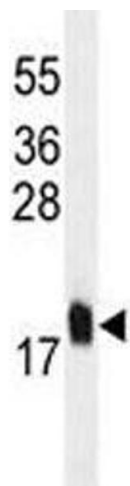
Preservative: Sodium azide

Precaution of Use: This product contains Sodium azide: a POISONOUS AND HAZARDOUS SUBSTANCE which should be handled by trained staff only.

Storage: -20 °C

Storage Comment: Aliquot the MCFD2 antibody and store frozen at -20°C or colder. Avoid repeated freeze-thaw cycles.

## Images



### Western Blotting

**Image 1.** MCFD2 antibody western blot analysis in U251 lysate.



### Western Blotting

**Image 2.** MCFD2 antibody western blot analysis in U251 lysate.