

Datasheet for ABIN3028855
anti-MAG antibody (AA 439-466)[Go to Product page](#)

3 Images

Overview

Quantity:	0.4 mL
Target:	MAG
Binding Specificity:	AA 439-466
Reactivity:	Human
Host:	Rabbit
Clonality:	Polyclonal
Conjugate:	This MAG antibody is un-conjugated
Application:	Western Blotting (WB), ELISA, Flow Cytometry (FACS)

Product Details

Immunogen:	A portion of amino acids 439-466 from the human protein was used as the immunogen for this MAG antibody.
Isotype:	Ig Fraction
Purification:	Antigen affinity purified

Target Details

Target:	MAG
Alternative Name:	MAG (MAG Products)
Background:	MAG is a type I membrane protein and member of the immunoglobulin superfamily. It is thought to be involved in the process of myelination. It is a lectin that binds to sialylated glycoconjugates and mediates certain myelin-neuron cell-cell interactions.

Target Details

UniProt:	P20916
Pathways:	Neurotrophin Signaling Pathway

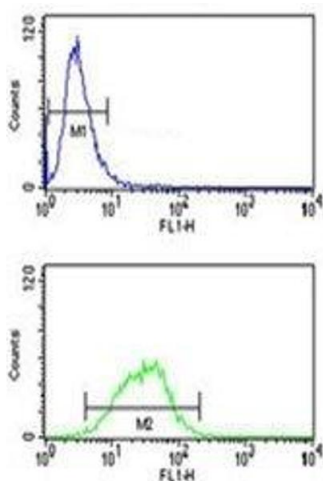
Application Details

Application Notes:	Titration of the MAG antibody may be required due to differences in protocols and secondary/substrate sensitivity.\. Western blot: 1:1000,Flow Cytometry: 1:10-1:50
Restrictions:	For Research Use only

Handling

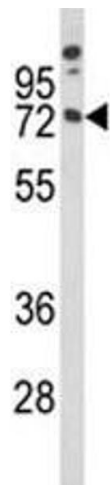
Format:	Liquid
Buffer:	In 1X PBS pH 7.4 with 0.09 % sodium azide
Preservative:	Sodium azide
Precaution of Use:	This product contains Sodium azide: a POISONOUS AND HAZARDOUS SUBSTANCE which should be handled by trained staff only.
Storage:	-20 °C
Storage Comment:	Aliquot the MAG antibody and store frozen at -20°C or colder. Avoid repeated freeze-thaw cycles.

Images



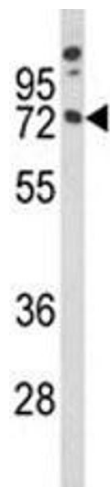
Flow Cytometry

Image 1. MAG antibody flow cytometry analysis of NCI-H460 cells (bottom histogram) compared to negative control cells (top histogram). FITC-conjugated goat-anti-rabbit secondary Ab was used for the analysis.



Western Blotting

Image 2. Western blot analysis of MAG antibody and A375 lysate



Western Blotting

Image 3. Western blot analysis of MAG antibody and A375 lysate