

Datasheet for ABIN3028858
anti-MYOD1 antibody (AA 211-240)[Go to Product page](#)

3 Images

Overview

Quantity:	0.4 mL
Target:	MYOD1
Binding Specificity:	AA 211-240
Reactivity:	Human
Host:	Rabbit
Clonality:	Polyclonal
Conjugate:	This MYOD1 antibody is un-conjugated
Application:	Western Blotting (WB), Immunofluorescence (IF), ELISA

Product Details

Immunogen:	A portion of amino acids 211-240 from the human protein was used as the immunogen for this MyoD antibody.
Isotype:	Ig Fraction
Purification:	Antigen affinity purified

Target Details

Target:	MYOD1
Alternative Name:	MyoD (MYOD1 Products)
Background:	This gene encodes a nuclear protein that belongs to the basic helix-loop-helix family of transcription factors and the myogenic factors subfamily. It regulates muscle cell differentiation by inducing cell cycle arrest, a prerequisite for myogenic initiation. The protein is

Target Details

also involved in muscle regeneration. It activates its own transcription which may stabilize commitment to myogenesis.

UniProt: [P15172](#)

Pathways: [Regulation of Muscle Cell Differentiation](#), [Skeletal Muscle Fiber Development](#)

Application Details

Application Notes: Titration of the MyoD antibody may be required due to differences in protocols and secondary/substrate sensitivity.\. Western blot: 1:1000,Immunofluorescence: 1:10-1:50

Restrictions: For Research Use only

Handling

Format: Liquid

Buffer: In 1X PBS, pH 7.4, with 0.09 % sodium azide

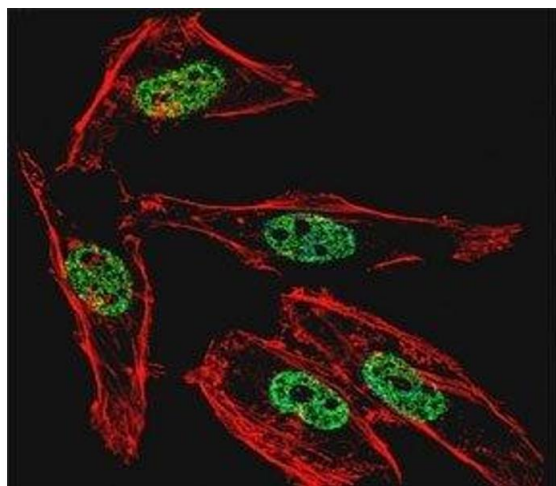
Preservative: Sodium azide

Precaution of Use: This product contains Sodium azide: a POISONOUS AND HAZARDOUS SUBSTANCE which should be handled by trained staff only.

Storage: -20 °C

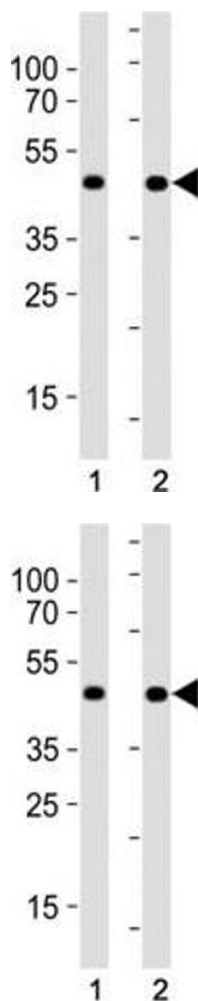
Storage Comment: Aliquot the MyoD antibody and store frozen at -20°C or colder. Avoid repeated freeze-thaw cycles.

Images



Immunofluorescence

Image 1. Fluorescent confocal image of HeLa cell stained with MyoD1 antibody at 1:25. MyoD immunoreactivity is localized to the nucleus.



Western Blotting

Image 2. MyoD antibody western blot analysis in (1) HeLa cell line and (2) human placenta tissue lysate. Expected molecular weight: 43-45 kDa

Western Blotting

Image 3. MyoD antibody western blot analysis in (1) HeLa cell line and (2) human placenta tissue lysate. Expected molecular weight: 43-45 kDa