

Datasheet for ABIN3028860

**anti-Myoglobin antibody (AA 138-154)****3** Images[Go to Product page](#)

## Overview

Quantity:	100 µg
Target:	Myoglobin (MB)
Binding Specificity:	AA 138-154
Reactivity:	Rat, Mouse
Host:	Rabbit
Clonality:	Polyclonal
Conjugate:	This Myoglobin antibody is un-conjugated
Application:	Western Blotting (WB), Immunohistochemistry (Paraffin-embedded Sections) (IHC (p))

## Product Details

Immunogen:	Amino acids 138-154 (LFRNDIAAKYKELGFQG-mouse) were used as the immunogen for this Myoglobin antibody (100% rat homology).
Isotype:	IgG
Purification:	Antigen affinity

## Target Details

Target:	Myoglobin (MB)
Alternative Name:	Myoglobin ( <a href="#">MB Products</a> )
Background:	Human Myoglobin (MG) has 152 residues. Two MG variants were found. The Myoglobin locus mapped to 22q11-22q13. The gene is about 10.5 kb long and contains two introns as in the case with hemoglobin genes. Myoglobin/MG may serve a variety of functions in muscular

## Target Details

oxygen supply, such as O2 storage, facilitated O2 diffusion, and Myoglobin-mediated oxidative phosphorylation.

UniProt: [P04247](#)

Pathways: [Brown Fat Cell Differentiation](#)

## Application Details

Application Notes: Titration of the Myoglobin antibody may be required due to differences in protocols and secondary/substrate sensitivity.\. Western blot: 0.5-1 µg/mL,IHC (Paraffin): 0.5-1 µg/mL

Restrictions: For Research Use only

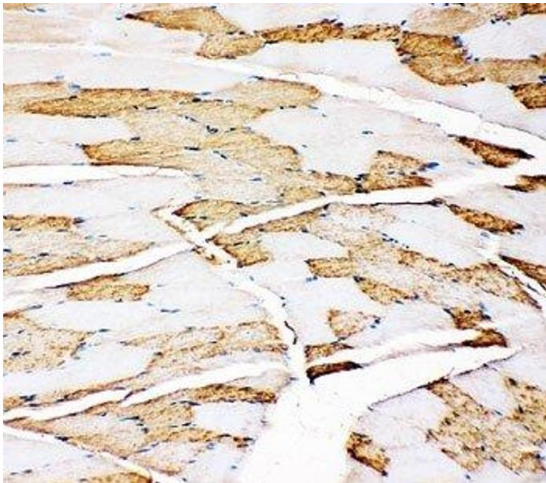
## Handling

Buffer: 0.5 mg/mL if reconstituted with 0.2 mL sterile DI water

Storage: -20 °C

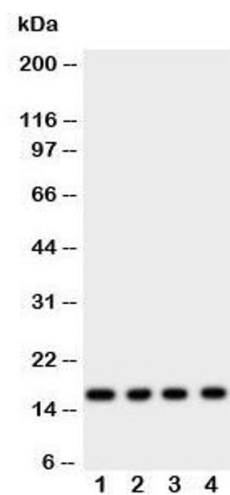
Storage Comment: After reconstitution, the Myoglobin antibody can be stored for up to one month at 4°C. For long-term, aliquot and store at -20°C. Avoid repeated freezing and thawing.

## Images



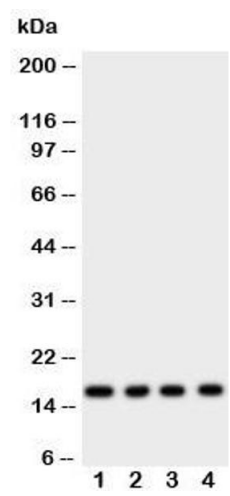
### Immunohistochemistry

**Image 1.** IHC-P: Myoglobin antibody testing of rat skeletal muscle tissue



**Western Blotting**

**Image 2.** Western blot testing of Myoglobin antibody and rat samples 1: skeletal muscle; 2: heart; 3: liver; 4: intestine tissue lysate. Predicted size: 17KD



**Western Blotting**

**Image 3.** Western blot testing of Myoglobin antibody and rat samples 1: skeletal muscle