

Datasheet for ABIN3028866  
**anti-Neuropilin 1 antibody (AA 722-750)**

## 5 Images

[Go to Product page](#)

## Overview

Quantity:	0.4 mL
Target:	Neuropilin 1 (NRP1)
Binding Specificity:	AA 722-750
Reactivity:	Human
Host:	Rabbit
Clonality:	Polyclonal
Conjugate:	This Neuropilin 1 antibody is un-conjugated
Application:	Western Blotting (WB), Immunohistochemistry (IHC), ELISA, Flow Cytometry (FACS)

## Product Details

Immunogen:	A portion of amino acids 722-750 from the human protein was used as the immunogen for this NRP1 antibody.
Isotype:	Ig Fraction
Cross-Reactivity (Details):	Expected species reactivity: Mouse
Purification:	Antigen affinity purified

## Target Details

Target:	Neuropilin 1 (NRP1)
Alternative Name:	NRP1 ( <a href="#">NRP1 Products</a> )
Background:	NRP1 is a membrane-bound coreceptor to a tyrosine kinase receptor for both vascular

## Target Details

endothelial growth factor (VEGF, MIM 192240) and semaphorin (see SEMA3A, MIM 603961) family members. NRP1 plays versatile roles in angiogenesis, axon guidance, cell survival, migration, and invasion.

UniProt: [O14786](#)

Pathways: [Regulation of Cell Size](#), [Signaling Events mediated by VEGFR1 and VEGFR2](#), [Smooth Muscle Cell Migration](#), [Platelet-derived growth Factor Receptor Signaling](#), [VEGFR1 Specific Signals](#)

## Application Details

Application Notes: Titration of the NRP1 antibody may be required due to differences in protocols and secondary/substrate sensitivity.\. Western blot: 1:1000,IHC (Paraffin): 1:50-1:100,Flow Cytometry: 1:10-1:50

Restrictions: For Research Use only

## Handling

Format: Liquid

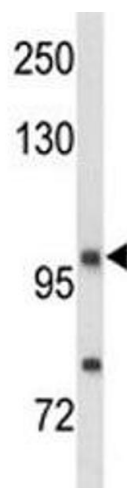
Buffer: In 1X PBS, pH 7.4, with 0.09 % sodium azide

Preservative: Sodium azide

Precaution of Use: This product contains Sodium azide: a POISONOUS AND HAZARDOUS SUBSTANCE which should be handled by trained staff only.

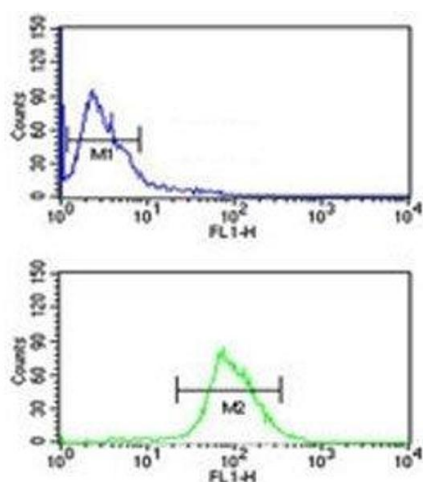
Storage: -20 °C

Storage Comment: Aliquot the NRP1 antibody and store frozen at -20°C or colder. Avoid repeated freeze-thaw cycles.



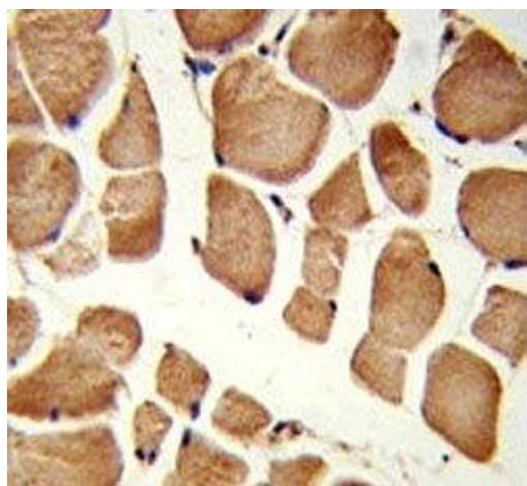
#### Western Blotting

**Image 1.** Western blot analysis of NRP1 antibody and MDA-MB435 lysate



#### Flow Cytometry

**Image 2.** NRP1 antibody flow cytometric analysis of MDA-MB435 cells (green) compared to a negative control (blue). FITC-conjugated goat-anti-rabbit secondary Ab was used for the analysis.



#### Immunohistochemistry

**Image 3.** IHC analysis of FFPE human skeletal muscle stained with NRP1 antibody

Please check the [product details page](#) for more images. Overall 5 images are available for ABIN3028866.