



Datasheet for ABIN3028868
anti-NKX1-1 antibody (AA 1-1)



[Go to Product page](#)

3 Images

Overview

Quantity:	0.4 mL
Target:	NKX1-1
Binding Specificity:	AA 1-1
Reactivity:	Human
Host:	Rabbit
Clonality:	Polyclonal
Conjugate:	This NKX1-1 antibody is un-conjugated
Application:	Western Blotting (WB), ELISA, Immunofluorescence (IF)

Product Details

Immunogen:	A portion of amino acids 1-1 from the human protein was used as the immunogen for this NKX1.1 antibody.
Isotype:	Ig Fraction
Purification:	Antigen affinity purified

Target Details

Target:	NKX1-1
Alternative Name:	NKX1.1 (NKX1-1 Products)
Background:	NKX1.1 belongs to the NK-1 homeobox family. It is a DNA dependent regulator of transcription.
UniProt:	Q15270

Target Details

Pathways: [Regulation of Carbohydrate Metabolic Process](#)

Application Details

Application Notes: Titration of the NKX1.1 antibody may be required due to differences in protocols and secondary/substrate sensitivity.\. Western blot: 1:1000,Immunofluorescence: 1:10-1:50

Restrictions: For Research Use only

Handling

Format: Liquid

Buffer: In 1X PBS, pH 7.4, with 0.09 % sodium azide

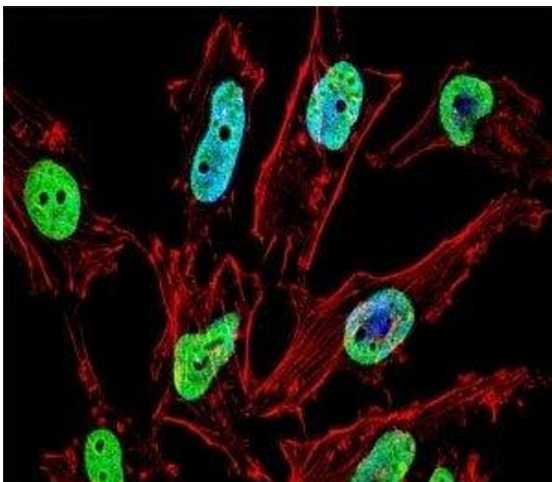
Preservative: Sodium azide

Precaution of Use: This product contains Sodium azide: a POISONOUS AND HAZARDOUS SUBSTANCE which should be handled by trained staff only.

Storage: -20 °C

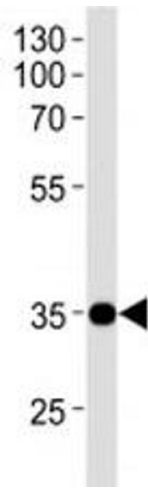
Storage Comment: Aliquot the NKX1.1 antibody and store frozen at -20°C or colder. Avoid repeated freeze-thaw cycles.

Images



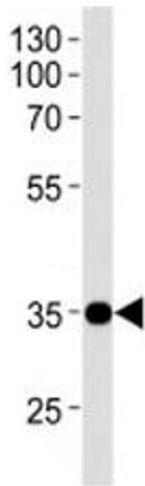
Immunofluorescence

Image 1. Fluorescent confocal image of HeLa cell stained with NKX1.1 antibody. For secondary Ab, Alexa Fluor 488 conjugated donkey anti-rabbit Ab (green) was used (1:400, 50 min at 37°C). NKX1.1 immunoreactivity is localized to the nucleus.



Western Blotting

Image 2. NKX1.1 antibody western blot analysis in SK-N-MC lysate.



Western Blotting

Image 3. NKX1.1 antibody western blot analysis in SK-N-MC lysate.