

Datasheet for ABIN3028869
anti-NKX1-2 antibody (AA 1-2)

3 Images

[Go to Product page](#)

Overview

Quantity:	0.4 mL
Target:	NKX1-2
Binding Specificity:	AA 1-2
Reactivity:	Human
Host:	Rabbit
Clonality:	Polyclonal
Conjugate:	This NKX1-2 antibody is un-conjugated
Application:	Western Blotting (WB), Flow Cytometry (FACS), ELISA

Product Details

Immunogen:	A portion of amino acids 1-2 from the human protein was used as the immunogen for this NKX1.2 antibody.
Isotype:	Ig Fraction
Purification:	Antigen affinity purified

Target Details

Target:	NKX1-2
Alternative Name:	NKX1.2 (NKX1-2 Products)
Background:	NKX1-2 may function in cell specification, particularly in the CNS (By similarity).
UniProt:	Q9UD57

Application Details

Application Notes:	Titration of the NKX1.2 antibody may be required due to differences in protocols and secondary/substrate sensitivity.\. Western blot: 1:1000,Flow Cytometry: 1:10-1:50
Restrictions:	For Research Use only

Handling

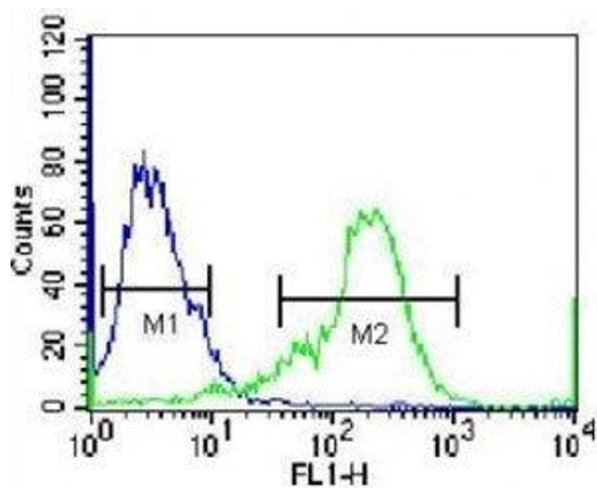
Format:	Liquid
Buffer:	In 1X PBS, pH 7.4, with 0.09 % sodium azide
Preservative:	Sodium azide
Precaution of Use:	This product contains Sodium azide: a POISONOUS AND HAZARDOUS SUBSTANCE which should be handled by trained staff only.
Storage:	-20 °C
Storage Comment:	Aliquot the NKX1.2 antibody and store frozen at -20°C or colder. Avoid repeated freeze-thaw cycles.

Images



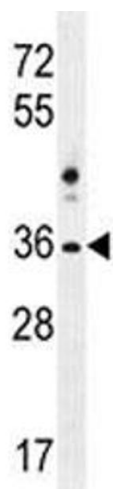
Western Blotting

Image 1. NKX1.2 antibody western blot analysis in 293 lysate



Flow Cytometry

Image 2. NKX1.2 antibody flow cytometric analysis of 293 cells (green) compared to a negative control (blue). FITC-conjugated goat-anti-rabbit secondary Ab was used for the analysis.



Western Blotting

Image 3. NKX1.2 antibody western blot analysis in 293 lysate