

Datasheet for ABIN3028870
anti-Nkx2-2 antibody (AA 2-2)



[Go to Product page](#)

2 Images

Overview

Quantity:	0.4 mL
Target:	Nkx2-2
Binding Specificity:	AA 2-2
Reactivity:	Human
Host:	Rabbit
Clonality:	Polyclonal
Conjugate:	This Nkx2-2 antibody is un-conjugated
Application:	Western Blotting (WB), ELISA

Product Details

Immunogen:	A portion of amino acids 2-2 from the human protein was used as the immunogen for this NKX2.2 antibody.
Isotype:	Ig Fraction
Purification:	Antigen affinity purified

Target Details

Target:	Nkx2-2
Alternative Name:	NKX2.2 (Nkx2-2 Products)
Background:	The protein encoded by this gene contains a homeobox domain and may be involved in the morphogenesis of the central nervous system. This gene is found on chromosome 20 near NKX2-4, and these two genes appear to be duplicated on chromosome 14 in the form of TITF1

Target Details

	and NKX2-8. The encoded protein is likely to be a nuclear transcription factor.
UniProt:	O95096
Pathways:	Dopaminergic Neurogenesis

Application Details

Application Notes:	Titration of the NKX2.2 antibody may be required due to differences in protocols and secondary/substrate sensitivity.\. Western blot: 1:1000
Restrictions:	For Research Use only

Handling

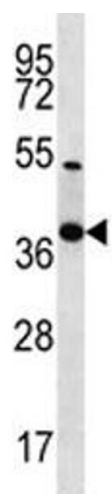
Format:	Liquid
Buffer:	In 1X PBS, pH 7.4, with 0.09 % sodium azide
Preservative:	Sodium azide
Precaution of Use:	This product contains Sodium azide: a POISONOUS AND HAZARDOUS SUBSTANCE which should be handled by trained staff only.
Storage:	-20 °C
Storage Comment:	Aliquot the NKX2.2 antibody and store frozen at -20°C or colder. Avoid repeated freeze-thaw cycles.

Images



Western Blotting

Image 1. NKX2.2 antibody western blot analysis in 293 lysate.



Western Blotting

Image 2. NKX2.2 antibody western blot analysis in 293 lysate.