

Datasheet for ABIN3028872
anti-NKX2-6 antibody (AA 2-6)[Go to Product page](#)

2 Images

Overview

Quantity:	0.4 mL
Target:	NKX2-6
Binding Specificity:	AA 2-6
Reactivity:	Human
Host:	Rabbit
Clonality:	Polyclonal
Conjugate:	This NKX2-6 antibody is un-conjugated
Application:	Western Blotting (WB), ELISA

Product Details

Immunogen:	A portion of amino acids 2-6 from the human protein was used as the immunogen for this NKX2.6 antibody.
Isotype:	Ig Fraction
Purification:	Antigen affinity purified

Target Details

Target:	NKX2-6
Alternative Name:	NKX2.6 (NKX2-6 Products)
Background:	In conjunction with NKX2-5, may play a role in both pharyngeal and cardiac embryonic development (By similarity).

Target Details

UniProt: [A6NCS4](#)

Application Details

Application Notes: Titration of the NKX2.6 antibody may be required due to differences in protocols and secondary/substrate sensitivity.\. Western blot: 1:1000

Restrictions: For Research Use only

Handling

Format: Liquid

Buffer: In 1X PBS, pH 7.4, with 0.09 % sodium azide

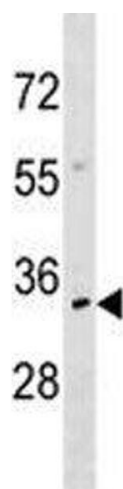
Preservative: Sodium azide

Precaution of Use: This product contains Sodium azide: a POISONOUS AND HAZARDOUS SUBSTANCE which should be handled by trained staff only.

Storage: -20 °C

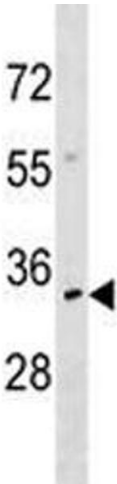
Storage Comment: Aliquot the NKX2.6 antibody and store frozen at -20°C or colder. Avoid repeated freeze-thaw cycles.

Images



Western Blotting

Image 1. NKX2.6 antibody western blot analysis in CEM lysate



Western Blotting

Image 2. NKX2.6 antibody western blot analysis in CEM lysate