

Datasheet for ABIN3028876
anti-NKX6-1 antibody (AA 284-312)[Go to Product page](#)

2 Images

Overview

Quantity:	0.4 mL
Target:	NKX6-1
Binding Specificity:	AA 284-312
Reactivity:	Human
Host:	Rabbit
Clonality:	Polyclonal
Conjugate:	This NKX6-1 antibody is un-conjugated
Application:	Western Blotting (WB), ELISA

Product Details

Immunogen:	A portion of amino acids 284-312 from the human protein was used as the immunogen for this NKX6.1 antibody.
Isotype:	Ig Fraction
Cross-Reactivity (Details):	Expected species reactivity: Mouse, Rat
Purification:	Antigen affinity purified

Target Details

Target:	NKX6-1
Alternative Name:	NKX6.1 (NKX6-1 Products)
Background:	In the pancreas, NKX6.1 is required for the development of beta cells and is a potent

Target Details

bifunctional transcription regulator that binds to AT-rich sequences within the promoter region of target genes lype et al. [OMIM].

UniProt: [P78426](#)

Pathways: [Dopaminergic Neurogenesis, Positive Regulation of Peptide Hormone Secretion](#)

Application Details

Application Notes: Titration of the NKX6.1 antibody may be required due to differences in protocols and secondary/substrate sensitivity.\. Western blot: 1:1000

Restrictions: For Research Use only

Handling

Format: Liquid

Buffer: In 1X PBS, pH 7.4, with 0.09 % sodium azide

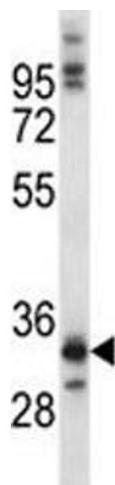
Preservative: Sodium azide

Precaution of Use: This product contains Sodium azide: a POISONOUS AND HAZARDOUS SUBSTANCE which should be handled by trained staff only.

Storage: -20 °C

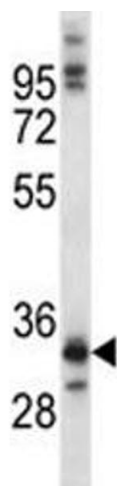
Storage Comment: Aliquot the NKX6.1 antibody and store frozen at -20°C or colder. Avoid repeated freeze-thaw cycles.

Images



Western Blotting

Image 1. NKX6.1 antibody western blot analysis in A549 lysate.



Western Blotting

Image 2. NKX6.1 antibody western blot analysis in A549 lysate.