

Datasheet for ABIN3028877
anti-NKX6-1 antibody (AA 285-314)[Go to Product page](#)

3 Images

Overview

Quantity:	0.4 mL
Target:	NKX6-1
Binding Specificity:	AA 285-314
Reactivity:	Human, Mouse
Host:	Rabbit
Clonality:	Polyclonal
Conjugate:	This NKX6-1 antibody is un-conjugated
Application:	Western Blotting (WB), ELISA

Product Details

Immunogen:	A portion of amino acids 285-314 from the human protein was used as the immunogen for this NKX6.1 antibody.
Isotype:	Ig Fraction
Cross-Reactivity (Details):	Expected species reactivity: Rat
Purification:	Antigen affinity purified

Target Details

Target:	NKX6-1
Alternative Name:	NKX6.1 (NKX6-1 Products)
Background:	In the pancreas, NKX6.1 is required for the development of beta cells and is a potent

Target Details

bifunctional transcription regulator that binds to AT-rich sequences within the promoter region of target genes lype et al. [OMIM].

UniProt: [P78426](#)

Pathways: [Dopaminergic Neurogenesis, Positive Regulation of Peptide Hormone Secretion](#)

Application Details

Application Notes: Titration of the NKX6.1 antibody may be required due to differences in protocols and secondary/substrate sensitivity.\. Western blot: 1:1000

Restrictions: For Research Use only

Handling

Format: Liquid

Buffer: In 1X PBS, pH 7.4, with 0.09 % sodium azide

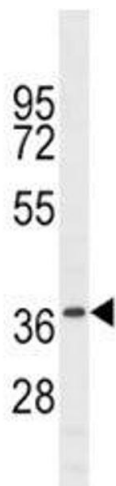
Preservative: Sodium azide

Precaution of Use: This product contains Sodium azide: a POISONOUS AND HAZARDOUS SUBSTANCE which should be handled by trained staff only.

Storage: -20 °C

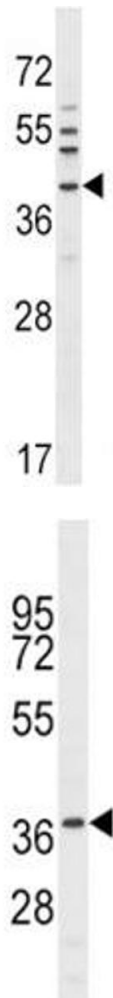
Storage Comment: Aliquot the NKX6.1 antibody and store frozen at -20°C or colder. Avoid repeated freeze-thaw cycles.

Images



Western Blotting

Image 1. NKX6.1 antibody western blot analysis in mouse liver tissue lysate



Western Blotting

Image 2. NKX6.1 antibody western blot analysis in A549 lysate

Western Blotting

Image 3. NKX6.1 antibody western blot analysis in mouse liver tissue lysate