

Datasheet for ABIN3028878  
**anti-NKX6-2 antibody (AA 17-43)**[Go to Product page](#)

## 2 Images

## Overview

Quantity:	0.4 mL
Target:	NKX6-2
Binding Specificity:	AA 17-43
Reactivity:	Human
Host:	Rabbit
Clonality:	Polyclonal
Conjugate:	This NKX6-2 antibody is un-conjugated
Application:	Western Blotting (WB), ELISA

## Product Details

Immunogen:	A portion of amino acids 17-43 from the human protein was used as the immunogen for this NKX6.2 antibody.
Isotype:	Ig Fraction
Purification:	Antigen affinity purified

## Target Details

Target:	NKX6-2
Alternative Name:	NKX6.2 ( <a href="#">NKX6-2 Products</a> )
Background:	NKX6.2 is a DNA-dependent regulator of transcription.
UniProt:	<a href="#">Q9C056</a>

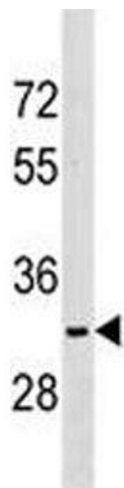
## Application Details

Application Notes:	Titration of the NKX6.2 antibody may be required due to differences in protocols and secondary/substrate sensitivity.\. Western blot: 1:1000
Restrictions:	For Research Use only

## Handling

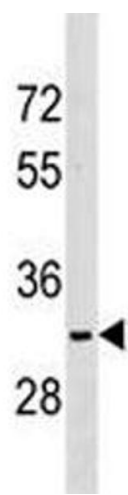
Format:	Liquid
Buffer:	In 1X PBS, pH 7.4, with 0.09 % sodium azide
Preservative:	Sodium azide
Precaution of Use:	This product contains Sodium azide: a POISONOUS AND HAZARDOUS SUBSTANCE which should be handled by trained staff only.
Storage:	-20 °C
Storage Comment:	Aliquot the NKX6.2 antibody and store frozen at -20°C or colder. Avoid repeated freeze-thaw cycles.

## Images



**Western Blotting**

**Image 1.** NKX6.2 antibody western blot analysis in K562 lysate.



Western Blotting

**Image 2.** NKX6.2 antibody western blot analysis in K562 lysate.