

Datasheet for ABIN3028881
anti-NLRP6 antibody (AA 343-372)[Go to Product page](#)

2 Images

Overview

Quantity:	0.4 mL
Target:	NLRP6
Binding Specificity:	AA 343-372
Reactivity:	Mouse
Host:	Rabbit
Clonality:	Polyclonal
Conjugate:	This NLRP6 antibody is un-conjugated
Application:	ELISA, Western Blotting (WB)

Product Details

Immunogen:	A portion of amino acids 343-372 from the mouse protein was used as the immunogen for this Nlrp6 antibody.
Isotype:	Ig Fraction
Cross-Reactivity (Details):	Expected species reactivity: Rat
Purification:	Antigen affinity purified

Target Details

Target:	NLRP6
Alternative Name:	Nlrp6 (NLRP6 Products)
Background:	Nlrp6 may mediate activation of CASP1 via ASC and promote activation of NF-kappa-B (By

Target Details

	similarity).
UniProt:	Q91WS2
Pathways:	Inflammasome

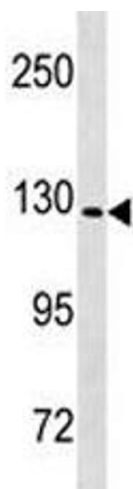
Application Details

Application Notes:	Titration of the Nlrp6 antibody may be required due to differences in protocols and secondary/substrate sensitivity.\. Western blot: 1:1000
Restrictions:	For Research Use only

Handling

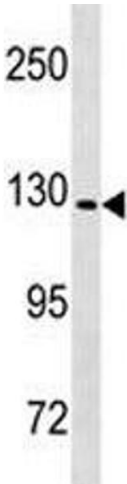
Format:	Liquid
Buffer:	In 1X PBS pH 7.4 with 0.09 % sodium azide
Preservative:	Sodium azide
Precaution of Use:	This product contains Sodium azide: a POISONOUS AND HAZARDOUS SUBSTANCE which should be handled by trained staff only.
Storage:	-20 °C
Storage Comment:	Aliquot the Nlrp6 antibody and store frozen at -20°C or colder. Avoid repeated freeze-thaw cycles.

Images



Western Blotting

Image 1. Nlrp6 antibody western blot analysis in mouse heart tissue lysate.



Western Blotting

Image 2. Nlrp6 antibody western blot analysis in mouse heart tissue lysate.