

Datasheet for ABIN3028907
anti-OTX2 antibody (C-Term)

3 Images

[Go to Product page](#)

Overview

Quantity:	0.4 mL
Target:	OTX2
Binding Specificity:	C-Term
Reactivity:	Human
Host:	Rabbit
Clonality:	Polyclonal
Conjugate:	This OTX2 antibody is un-conjugated
Application:	Western Blotting (WB), ELISA, Immunohistochemistry (IHC)

Product Details

Immunogen:	This OTX2 antibody was produced from a rabbit immunized with a KLH conjugated synthetic peptide between 201-226 amino acids from the C-terminal region of human OTX2.
Isotype:	Ig Fraction
Cross-Reactivity (Details):	Expected species reactivity: Mouse, Rat
Purification:	Antigen affinity purified

Target Details

Target:	OTX2
Alternative Name:	OTX2 (OTX2 Products)
Background:	Probably plays a role in the development of the brain and the sense organs. Can bind to the

Target Details

BCD target sequence (BTS): 5'-TCTAATCCC-3'.

UniProt: [P32243](#)

Pathways: [Dopaminergic Neurogenesis](#)

Application Details

Application Notes: Titration of the OTX2 antibody may be required due to differences in protocols and secondary/substrate sensitivity.\. IHC (Paraffin): 1:25,Western blot: 1:1000

Restrictions: For Research Use only

Handling

Format: Liquid

Buffer: In 1X PBS, pH 7.4, with 0.09 % sodium azide

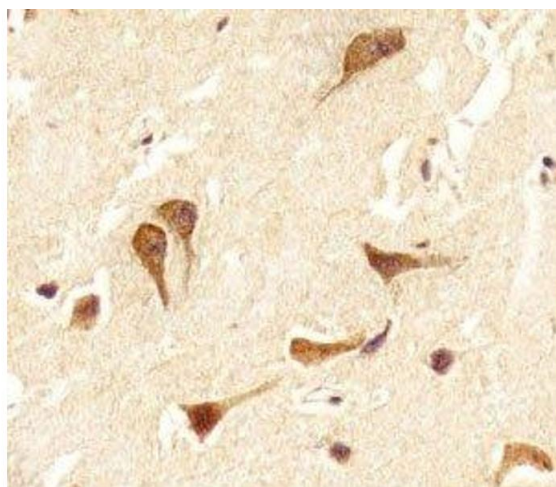
Preservative: Sodium azide

Precaution of Use: This product contains Sodium azide: a POISONOUS AND HAZARDOUS SUBSTANCE which should be handled by trained staff only.

Storage: -20 °C

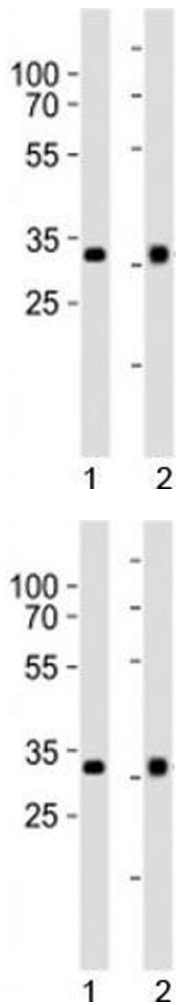
Storage Comment: Aliquot the OTX2 antibody and store frozen at -20°C or colder. Avoid repeated freeze-thaw cycles.

Images



Immunohistochemistry

Image 1. IHC analysis of FFPE human brain section using OTX2 antibody; Ab was diluted at 1:25.



Western Blotting

Image 2. Western blot analysis of lysate from 1) HepG2 and 2) Y79 cell line using OTX2 antibody at 1:1000.

Western Blotting

Image 3. Western blot analysis of lysate from 1) HepG2 and 2) Y79 cell line using OTX2 antibody at 1:1000.