



[Go to Product page](#)

Datasheet for ABIN3028910
anti-PAX1 antibody (AA 443-471)

3 Images

Overview

Quantity:	0.4 mL
Target:	PAX1
Binding Specificity:	AA 443-471
Reactivity:	Human
Host:	Rabbit
Clonality:	Polyclonal
Conjugate:	This PAX1 antibody is un-conjugated
Application:	Western Blotting (WB), ELISA, Flow Cytometry (FACS)

Product Details

Immunogen:	A portion of amino acids 443-471 from the human protein was used as the immunogen for this PAX1 antibody.
Isotype:	Ig Fraction
Purification:	Antigen affinity purified

Target Details

Target:	PAX1
Alternative Name:	PAX1 (PAX1 Products)
Background:	The PAX genes, including PAX1, are a highly conserved family of developmental control genes that encode transcription factors and have been shown to play a role in pattern formation during embryogenesis in vertebrates.

Target Details

UniProt: [P15863](#)

Application Details

Application Notes: Titration of the PAX1 antibody may be required due to differences in protocols and secondary/substrate sensitivity.\. Flow Cytometry: 1:10-1:50,Western blot: 1:1000

Restrictions: For Research Use only

Handling

Format: Liquid

Buffer: In 1X PBS, pH 7.4, with 0.09 % sodium azide

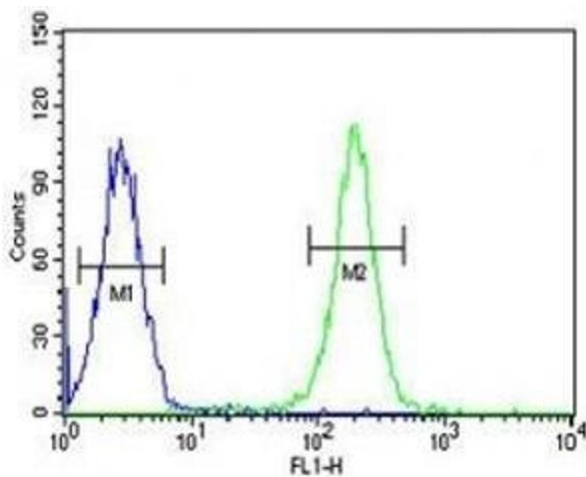
Preservative: Sodium azide

Precaution of Use: This product contains Sodium azide: a POISONOUS AND HAZARDOUS SUBSTANCE which should be handled by trained staff only.

Storage: -20 °C

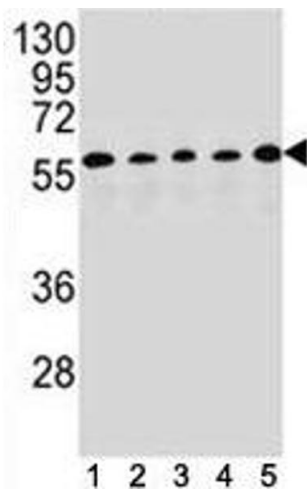
Storage Comment: Aliquot the PAX1 antibody and store frozen at -20°C or colder. Avoid repeated freeze-thaw cycles.

Images



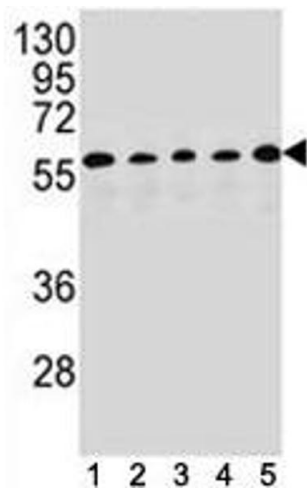
Flow Cytometry

Image 1. PAX1 antibody flow cytometric analysis of K562 cells (right histogram) compared to a negative control (left histogram)



Western Blotting

Image 2. PAX1 antibody western blot analysis in (1) HepG2, (2) MDA-MB453, (3) 293, (4) K562 and (5) MCF-7 lysate. Predicted size 45~55 kDa



Western Blotting

Image 3. PAX1 antibody western blot analysis in (1) HepG2, (2) MDA-MB453, (3) 293, (4) K562 and (5) MCF-7 lysate. Predicted size 45~55 kDa