

Datasheet for ABIN3028920
anti-PIN1 antibody (AA 30-56)

9 Images

[Go to Product page](#)

Overview

Quantity:	0.4 mL
Target:	PIN1
Binding Specificity:	AA 30-56
Reactivity:	Human
Host:	Rabbit
Clonality:	Polyclonal
Conjugate:	This PIN1 antibody is un-conjugated
Application:	Western Blotting (WB), ELISA, Immunohistochemistry (IHC), Immunofluorescence (IF), Flow Cytometry (FACS)

Product Details

Immunogen:	A portion of amino acids 30-56 from the human protein was used as the immunogen for this PIN1 antibody.
Isotype:	Ig Fraction
Cross-Reactivity (Details):	Expected species reactivity: Primate
Purification:	Antigen affinity purified

Target Details

Target:	PIN1
Alternative Name:	PIN1 (PIN1 Products)

Target Details

Background:	PIN1 is an essential nuclear peptidylprolyl cis-trans isomerase (PPlase, EC 5.2.1.8) involved in regulation of mitosis.
UniProt:	Q13526

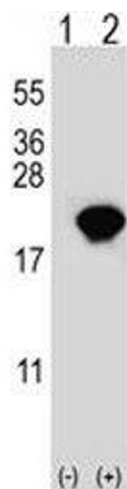
Application Details

Application Notes:	Titration of the PIN1 antibody may be required due to differences in protocols and secondary/substrate sensitivity.\. Western blot: 1:1000,IHC (Paraffin): 1:50-1:100,Flow Cytometry: 1:10-1:50,Immunofluorescence: 1:10-1:50
Restrictions:	For Research Use only

Handling

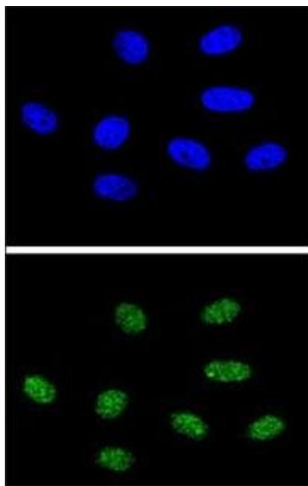
Format:	Liquid
Buffer:	In 1X PBS, pH 7.4, with 0.09 % sodium azide
Preservative:	Sodium azide
Precaution of Use:	This product contains Sodium azide: a POISONOUS AND HAZARDOUS SUBSTANCE which should be handled by trained staff only.
Storage:	-20 °C
Storage Comment:	Aliquot the PIN1 antibody and store frozen at -20°C or colder. Avoid repeated freeze-thaw cycles.

Images



Western Blotting

Image 1. Western blot analysis of PIN1 antibody and 293 cell lysate either nontransfected (Lane 1) or transiently transfected (2) with the PIN1 gene. Predicted molecular weight ~18 kDa.



Immunofluorescence

Image 2. Confocal immunofluorescent analysis of PIN1 antibody with 293 cells followed by Alexa Fluor 488-conjugated goat anti-rabbit IgG (green). DAPI was used as a nuclear counterstain (blue).



Western Blotting

Image 3. Western blot analysis of PIN1 antibody and HL-60 lysate

Please check the [product details page](#) for more images. Overall 9 images are available for ABIN3028920.