



[Go to Product page](#)

Datasheet for ABIN3028923
anti-PGP antibody (AA 33-62)

5 Images

Overview

Quantity:	0.4 mL
Target:	PGP
Binding Specificity:	AA 33-62
Reactivity:	Human
Host:	Rabbit
Clonality:	Polyclonal
Conjugate:	This PGP antibody is un-conjugated
Application:	Western Blotting (WB), Immunohistochemistry (IHC), ELISA, Flow Cytometry (FACS)

Product Details

Immunogen:	A portion of amino acids 33-62 from the human protein was used as the immunogen for this PGP antibody.
Isotype:	Ig Fraction
Purification:	Antigen affinity purified

Target Details

Target:	PGP
Alternative Name:	PGP (PGP Products)
Background:	PGP is a phosphatase with broad substrate specificity and has high phosphatase activity toward ADP, ATP, GDP, GTP and p-nitrophenylphosphate. Has tyrosine-protein phosphatase activity (in vitro).[UniProt]

Target Details

UniProt: [A6NDG6](#)

Application Details

Application Notes: Titration of the PGP antibody may be required due to differences in protocols and secondary/substrate sensitivity.\. Western blot: 1:1000,IHC (Paraffin): 1:50-1:100,Flow Cytometry: 1:10-1:50

Restrictions: For Research Use only

Handling

Format: Liquid

Buffer: In 1X PBS, pH 7.4, with 0.09 % sodium azide

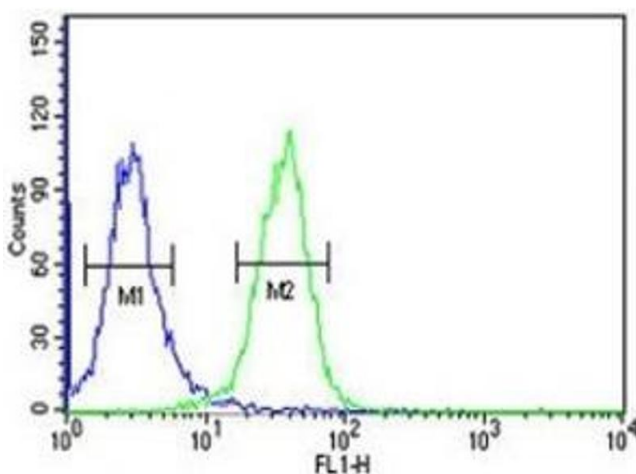
Preservative: Sodium azide

Precaution of Use: This product contains Sodium azide: a POISONOUS AND HAZARDOUS SUBSTANCE which should be handled by trained staff only.

Storage: -20 °C

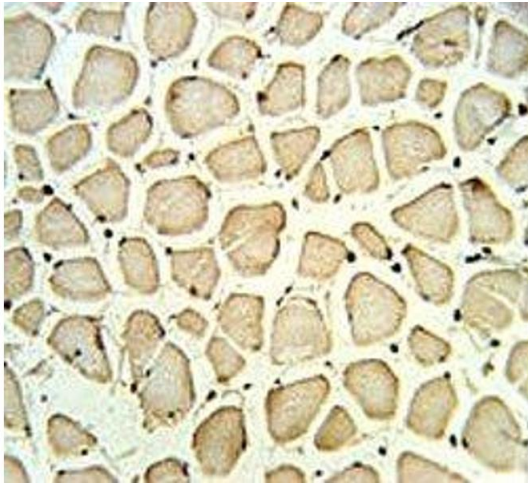
Storage Comment: Aliquot the PGP antibody and store frozen at -20°C or colder. Avoid repeated freeze-thaw cycles.

Images



Flow Cytometry

Image 1. PGP antibody flow cytometric analysis of K562 cells (green) compared to a negative control (blue). FITC-conjugated goat-anti-rabbit secondary Ab was used for the analysis.



Immunohistochemistry

Image 2. PGP antibody IHC analysis in formalin fixed and paraffin embedded skeletal muscle.



Western Blotting

Image 3. Western blot analysis of PGP antibody and K562 lysate

Please check the [product details page](#) for more images. Overall 5 images are available for ABIN3028923.