

Datasheet for ABIN3028956

anti-PINK1 antibody

10 Images

[Go to Product page](#)

Overview

Quantity:	0.2 mL
Target:	PINK1
Reactivity:	Human, Mouse, Rat
Host:	Mouse
Clonality:	Monoclonal
Conjugate:	This PINK1 antibody is un-conjugated
Application:	Western Blotting (WB), Immunohistochemistry (IHC), Immunofluorescence (IF)

Product Details

Immunogen:	Recombinant protein was used to produced this monoclonal PINK1 antibody.
Clone:	38CT20-8-5
Isotype:	IgG1
Purification:	Purified

Target Details

Target:	PINK1
Alternative Name:	PINK1 (PINK1 Products)
Background:	This gene encodes a serine/threonine protein kinase that localizes to mitochondria. It is thought to protect cells from stress-induced mitochondrial dysfunction. Mutations in this gene cause one form of autosomal recessive early-onset Parkinson disease.

Target Details

UniProt: [Q9BXM7](#)

Pathways: [Autophagy](#)

Application Details

Application Notes: Titration of the PINK1 antibody may be required due to differences in protocols and secondary/substrate sensitivity.\. IHC (Paraffin): 1:25-100,Immunofluorescence: 1:25,Western blot: 1:100-2000

Restrictions: For Research Use only

Handling

Format: Liquid

Buffer: In 1X PBS, pH 7.4, with 0.09 % sodium azide

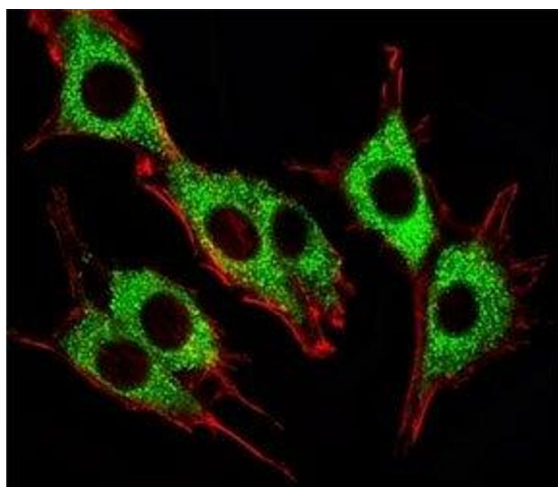
Preservative: Sodium azide

Precaution of Use: This product contains Sodium azide: a POISONOUS AND HAZARDOUS SUBSTANCE which should be handled by trained staff only.

Storage: -20 °C

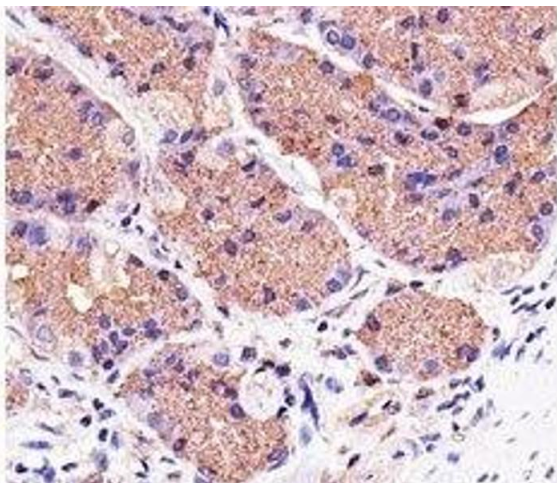
Storage Comment: Aliquot the PINK1 antibody and store frozen at -20°C or colder. Avoid repeated freeze-thaw cycles.

Images



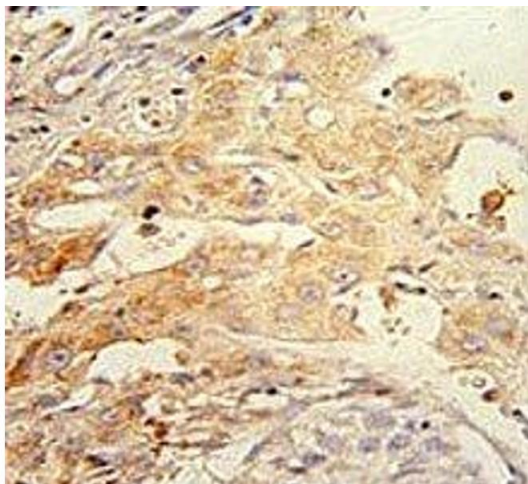
Immunofluorescence

Image 1. Fluorescent image of PC12 cells stained with Pink1 antibody. Ab was diluted at 1:25 dilution. An Alexa Fluor 488 secondary was used (green). Cytoplasmic actin was counterstained with Alexa Fluor 555 conjugated with Phalloidin (red).



Immunohistochemistry

Image 2. Immunohistochemical analysis of paraffin-embedded human stomach using PINK1 antibody at 1:25 dilution.



Immunohistochemistry

Image 3. PINK1 antibody immunohistochemistry analysis in formalin fixed and paraffin embedded human hepatocarcinoma.

Please check the [product details page](#) for more images. Overall 10 images are available for ABIN3028956.