

Datasheet for ABIN3028967  
**anti-RAB5 antibody (AA 182-211)**

## 6 Images

[Go to Product page](#)

## Overview

|                      |  |
|----------------------|--|
| Quantity:            | 0.4 mL   |
| Target:              | RAB5 (RAB5A)   |
| Binding Specificity: | AA 182-211   |
| Reactivity:          | Human  |
| Host:                | Rabbit   |
| Clonality:           | Polyclonal   |
| Conjugate:           | This RAB5 antibody is un-conjugated  |
| Application:         | Western Blotting (WB), ELISA, Immunohistochemistry (IHC), Immunofluorescence (IF), Flow Cytometry (FACS) |

## Product Details

|               |   |
|---------------|---|
| Immunogen:    | A portion of amino acids 182-211 from human Rab5a was used as the immunogen for this Rab5 antibody. |
| Isotype:      | Ig Fraction   |
| Purification: | Antigen affinity purified   |

## Target Details

|                   |  |
|-------------------|--|
| Target:           | RAB5 (RAB5A)   |
| Alternative Name: | Rab5 ( <a href="#">RAB5A Products</a> )                                  |
| Background:       | Rab5 is required for the fusion of plasma membranes and early endosomes. |

## Target Details

|           |   |
|-----------|---|
| UniProt:  | <a href="#">P20339</a>  |
| Pathways: | <a href="#">Smooth Muscle Cell Migration</a> , <a href="#">Regulation of long-term Neuronal Synaptic Plasticity</a> |

## Application Details

|                    |   |
|--------------------|---|
| Application Notes: | Titration of the Rab5 antibody may be required due to differences in protocols and secondary/substrate sensitivity.\. Western blot: 1:1000,IHC (Paraffin): 1:50-1:100,Immunofluorescence: 1:10-1:50,Flow Cytometry: 1:10-1:50 |
| Restrictions:      | For Research Use only   |

## Handling

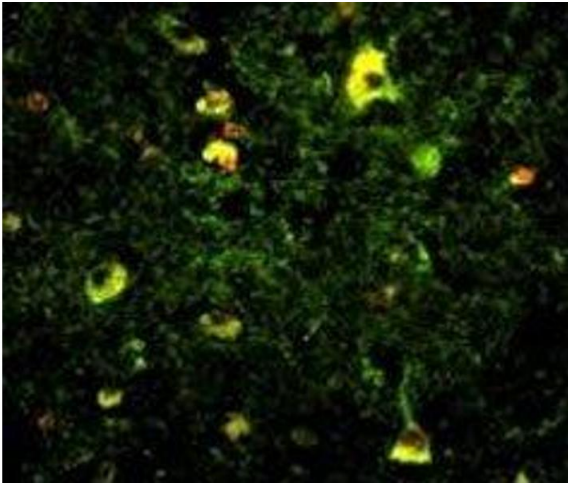
|                    |  |
|--------------------|--|
| Format:            | Liquid   |
| Buffer:            | In 1X PBS, pH 7.4, with 0.09 % sodium azide  |
| Preservative:      | Sodium azide   |
| Precaution of Use: | This product contains Sodium azide: a POISONOUS AND HAZARDOUS SUBSTANCE which should be handled by trained staff only. |
| Storage:           | -20 °C   |
| Storage Comment:   | Aliquot the Rab5 antibody and store frozen at -20°C or colder. Avoid repeated freeze-thaw cycles.                      |

## Images



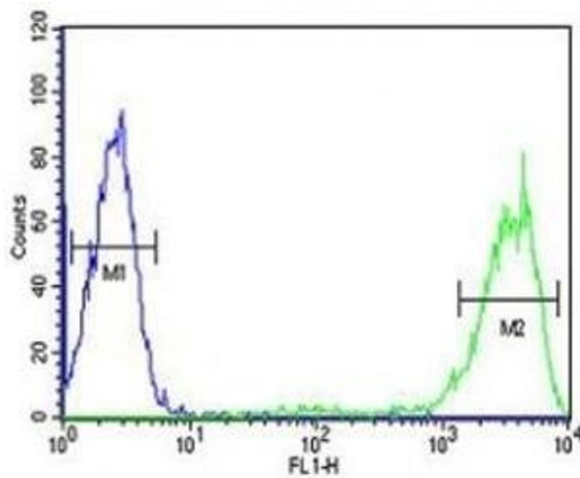
### Immunohistochemistry

**Image 1.** IHC analysis of FFPE human brain tissue with Rab5 antibody



### Immunofluorescence

**Image 2.** Immunofluorescence analysis of Rab5 antibody with paraffin-embedded human brain tissue. Primary antibody was followed by FITC-conjugated goat anti-rabbit IgG. FITC emits green fluorescence. Red counterstaining is PI.



### Flow Cytometry

**Image 3.** Rab5 antibody flow cytometric analysis of HL-60 cells (right histogram) compared to a negative control (left histogram). FITC-conjugated goat-anti-rabbit secondary Ab was used for the analysis.

Please check the [product details page](#) for more images. Overall 6 images are available for ABIN3028967.