

Datasheet for ABIN3028971
anti-RAC1 antibody (AA 49-78)



[Go to Product page](#)

2 Images

Overview

Quantity:	0.4 mL
Target:	RAC1
Binding Specificity:	AA 49-78
Reactivity:	Human
Host:	Rabbit
Clonality:	Polyclonal
Conjugate:	This RAC1 antibody is un-conjugated
Application:	Western Blotting (WB), ELISA

Product Details

Immunogen:	A portion of amino acids 49-78 from the human protein was used as the immunogen for this RAC1 antibody.
Isotype:	Ig Fraction
Cross-Reactivity (Details):	Expected species reactivity: Mouse, Rat, Bovine, Pig, Primate, Chicken, Drosophila
Purification:	Antigen affinity purified

Target Details

Target:	RAC1
Abstract:	RAC1 Products
Background:	RAC1 is a GTPase belonging to the RAS superfamily of small GTP-binding proteins. It is a

Target Details

pleiotropic regulator of many cellular processes, including the cell cycle, cell-cell adhesion, motility (through the actin network), and of epithelial differentiation (proposed to be necessary for maintaining epidermal stem cells).

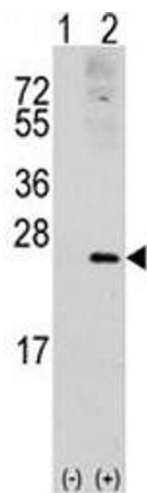
UniProt:	P63000
Pathways:	WNT Signaling , Regulation of Actin Filament Polymerization , Cell-Cell Junction Organization , Thromboxane A2 Receptor Signaling , VEGF Signaling

Application Details

Application Notes:	Titration of the RAC1 antibody may be required due to differences in protocols and secondary/substrate sensitivity.\. Western blot: 1:1000
Restrictions:	For Research Use only

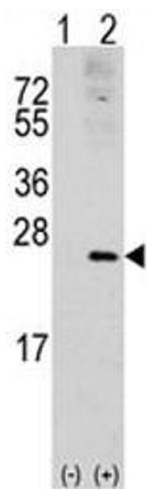
Handling

Format:	Liquid
Buffer:	In 1X PBS, pH 7.4, with 0.09 % sodium azide
Preservative:	Sodium azide
Precaution of Use:	This product contains Sodium azide: a POISONOUS AND HAZARDOUS SUBSTANCE which should be handled by trained staff only.
Storage:	-20 °C
Storage Comment:	Aliquot the RAC1 antibody and store frozen at -20°C or colder. Avoid repeated freeze-thaw cycles.



Western Blotting

Image 1. Western blot analysis of RAC1 antibody and 293 cell lysate (2 ug/lane) either nontransfected (Lane 1) or transiently transfected with the RAC1 gene (2).



Western Blotting

Image 2. Western blot analysis of RAC1 antibody and 293 cell lysate (2 ug/lane) either nontransfected (Lane 1) or transiently transfected with the RAC1 gene (2).