

Datasheet for ABIN3028972
anti-ROR2 antibody (AA 750-800)



[Go to Product page](#)

3 Images

Overview

Quantity:	0.4 mL
Target:	ROR2
Binding Specificity:	AA 750-800
Reactivity:	Human, Mouse
Host:	Rabbit
Clonality:	Polyclonal
Conjugate:	This ROR2 antibody is un-conjugated
Application:	Western Blotting (WB), ELISA, Immunohistochemistry (IHC)

Product Details

Immunogen:	A portion of amino acids 750-800 from the mouse protein was used as the immunogen for this Ror2 antibody.
Isotype:	Ig Fraction
Purification:	Antigen affinity purified

Target Details

Target:	ROR2
Alternative Name:	Ror2 (ROR2 Products)
Background:	Tyrosine-protein kinase receptor which may be involved in the early formation of the chondrocytes. It seems to be required for cartilage and growth plate development. Phosphorylates YWHAB, leading to induction of osteogenesis and bone formation (By

Target Details

	similarity).
UniProt:	Q9Z138
Pathways:	RTK Signaling , WNT Signaling

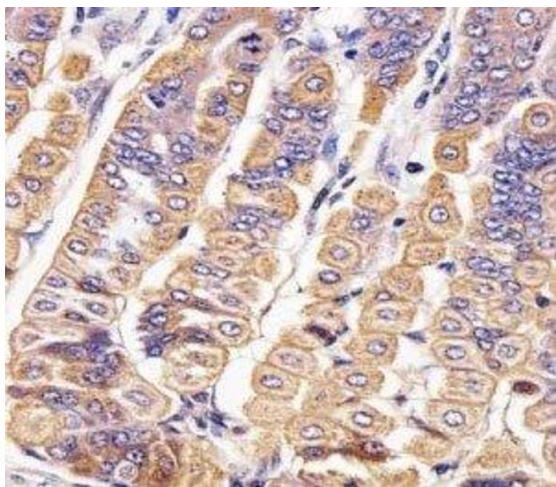
Application Details

Application Notes:	Titration of the Ror2 antibody may be required due to differences in protocols and secondary/substrate sensitivity.\. IHC (Paraffin): 1:25,Western blot: 1:1000
Restrictions:	For Research Use only

Handling

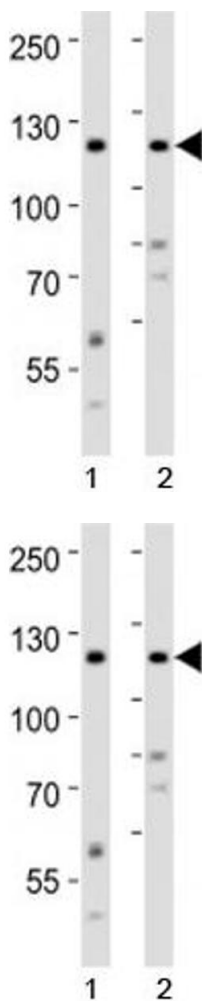
Format:	Liquid
Buffer:	In 1X PBS, pH 7.4, with 0.09 % sodium azide
Preservative:	Sodium azide
Precaution of Use:	This product contains Sodium azide: a POISONOUS AND HAZARDOUS SUBSTANCE which should be handled by trained staff only.
Storage:	-20 °C
Storage Comment:	Aliquot the Ror2 antibody and store frozen at -20°C or colder. Avoid repeated freeze-thaw cycles.

Images



Immunohistochemistry

Image 1. IHC analysis of FFPE mouse stomach section using Ror2 antibody; Ab was diluted at 1:25.



Western Blotting

Image 2. Western blot analysis of lysate from 1) HeLa and 2) SH-SY5Y cell line using Ror2 antibody at 1:1000.

Western Blotting

Image 3. Western blot analysis of lysate from 1) HeLa and 2) SH-SY5Y cell line using Ror2 antibody at 1:1000.