



[Go to Product page](#)

Datasheet for ABIN3028975
anti-RCAN1 antibody (AA 75-104)

3 Images

Overview

Quantity:	0.4 mL
Target:	RCAN1
Binding Specificity:	AA 75-104
Reactivity:	Human
Host:	Rabbit
Clonality:	Polyclonal
Conjugate:	This RCAN1 antibody is un-conjugated
Application:	Western Blotting (WB), ELISA

Product Details

Immunogen:	A portion of amino acids 75-104 from the human protein was used as the immunogen for this DSCR1 antibody.
Isotype:	Ig Fraction
Purification:	Purified

Target Details

Target:	RCAN1
Alternative Name:	DSCR1 (RCAN1 Products)
Background:	DSCR1 (calcipressin 1) interacts with calcineurin A and inhibits calcineurin-dependent signaling pathways, possibly affecting central nervous system development. The gene for this protein is located in the minimal candidate region for the Down syndrome phenotype, and is

Target Details

overexpressed in the brain of Down syndrome fetuses. Chronic overexpression of this gene may lead to neurofibrillary tangles such as those associated with Alzheimer disease.

UniProt: [P53805](#)

Pathways: [Regulation of Muscle Cell Differentiation, Skeletal Muscle Fiber Development](#)

Application Details

Application Notes: Titration of the DSCR1 antibody may be required due to differences in protocols and secondary/substrate sensitivity.\. Western blot: 1:1000

Restrictions: For Research Use only

Handling

Format: Liquid

Buffer: In 1X PBS pH 7.4 with 0.09 % sodium azide

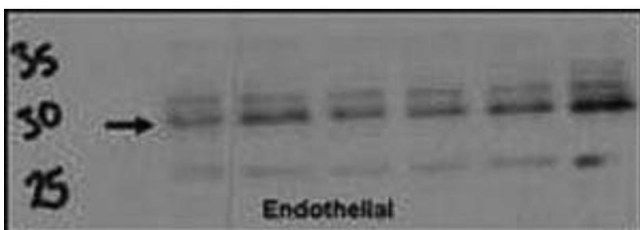
Preservative: Sodium azide

Precaution of Use: This product contains Sodium azide: a POISONOUS AND HAZARDOUS SUBSTANCE which should be handled by trained staff only.

Storage: -20 °C

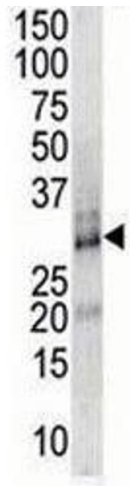
Storage Comment: Aliquot the DSCR1 antibody and store frozen at -20°C or colder. Avoid repeated freeze-thaw cycles.

Images



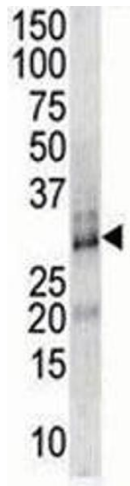
Western Blotting

Image 1. Western blot testing of DSCR1 antibody (1:500) and endothelial cell lysate. Data courtesy of Dr. Katherine Healey, NWCRF Institute, School of Biological Sciences, University of Wales Bangor.



Western Blotting

Image 2. DSCR1 antibody used in western blot to detect DSCR1 in endothelial cell lysate



Western Blotting

Image 3. DSCR1 antibody used in western blot to detect DSCR1 in endothelial cell lysate