



[Go to Product page](#)

Datasheet for ABIN3028977

anti-Retinoblastoma Protein (Rb) antibody (pSer608)

3 Images

Overview

Quantity:	0.4 mL
Target:	Retinoblastoma Protein (Rb) (Rb Protein)
Binding Specificity:	pSer608
Reactivity:	Human
Host:	Rabbit
Clonality:	Polyclonal
Conjugate:	This Retinoblastoma Protein (Rb) antibody is un-conjugated
Application:	ELISA, Immunohistochemistry (IHC), Dot Blot (DB)

Product Details

Immunogen:	This phospho-Rb antibody was produced from rabbits immunized with a KLH conjugated synthetic phosphopeptide corresponding to amino acid residues surrounding phosphorylated S608 of human Rb.
Isotype:	Ig Fraction
Purification:	Antigen affinity purified

Target Details

Target:	Retinoblastoma Protein (Rb) (Rb Protein)
Alternative Name:	Retinoblastoma / Rb (Rb Protein Products)
Background:	Retinoblastoma (RB) is an embryonic malignant neoplasm of retinal origin. It almost always presents in early childhood and is often bilateral. Spontaneous regression occurs in some

Target Details

cases.

UniProt: [P06400](#)

Pathways: [Mitotic G1-G1/S Phases](#)

Application Details

Application Notes: Titration of the phospho-Rb antibody may be required due to differences in protocols and secondary/substrate sensitivity.\. Dot blot: 1:500,IHC (Paraffin): 1:50-1:100

Restrictions: For Research Use only

Handling

Format: Liquid

Buffer: In 1X PBS, pH 7.4, with 0.09 % sodium azide

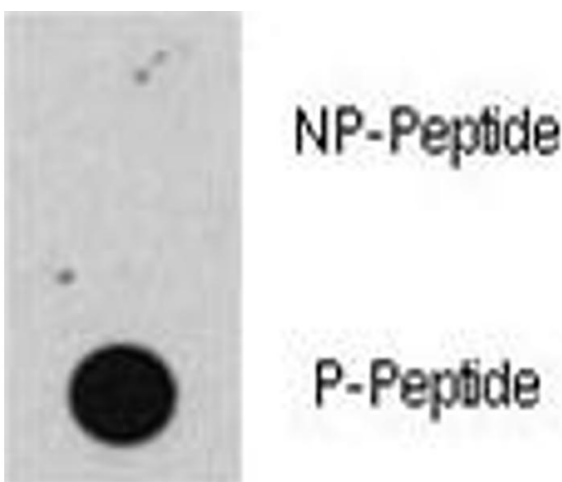
Preservative: Sodium azide

Precaution of Use: This product contains Sodium azide: a POISONOUS AND HAZARDOUS SUBSTANCE which should be handled by trained staff only.

Storage: -20 °C

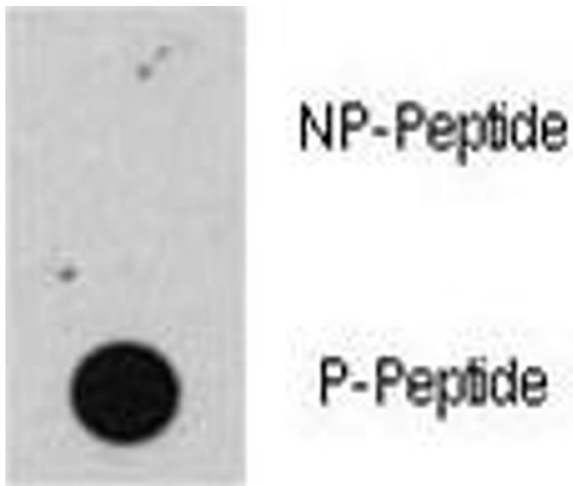
Storage Comment: Aliquot the phospho-Rb antibody and store frozen at -20°C or colder. Avoid repeated freeze-thaw cycles.

Images



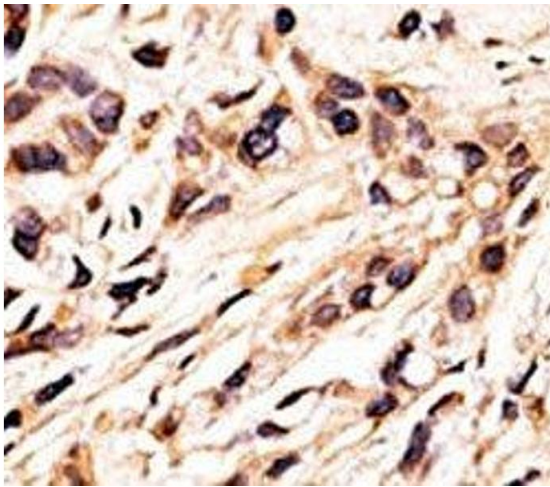
Dot Blot

Image 1. Dot blot analysis of phospho-Rb antibody. 50ng of phos-peptide or nonphos-peptide per dot were spotted.



Dot Blot

Image 2. Dot blot analysis of phospho-Rb antibody. 50ng of phos-peptide or nonphos-peptide per dot were spotted.



Immunohistochemistry

Image 3. IHC analysis of FFPE human breast carcinoma tissue stained with the phospho-Rb antibody.