



[Go to Product page](#)

Datasheet for ABIN3028981
anti-RHOXF1 antibody (AA 85-120)

3 Images

Overview

Quantity:	0.4 mL
Target:	RHOXF1
Binding Specificity:	AA 85-120
Reactivity:	Human
Host:	Rabbit
Clonality:	Polyclonal
Conjugate:	This RHOXF1 antibody is un-conjugated
Application:	Western Blotting (WB), ELISA

Product Details

Immunogen:	A portion of amino acids 85-120 of the human protein was used as immunogen for this RHOXF1 antibody.
Isotype:	Ig Fraction
Purification:	Antigen affinity purified

Target Details

Target:	RHOXF1
Alternative Name:	RHOXF1 (RHOXF1 Products)
Background:	RHOXF1 may be a transcription factor involved in the reproductive processes.
UniProt:	Q8NHV9

Target Details

Pathways: [Intracellular Steroid Hormone Receptor Signaling Pathway](#)

Application Details

Application Notes: Titration of the RHOXF1 antibody may be required due to differences in protocols and secondary/substrate sensitivity.\. Western blot: 1:1000-2000

Restrictions: For Research Use only

Handling

Format: Liquid

Buffer: In 1X PBS, pH 7.4, with 0.09 % sodium azide

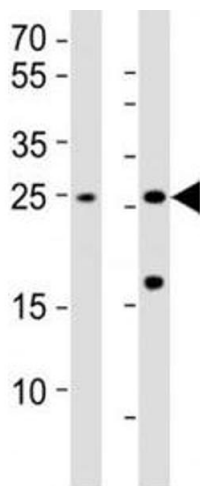
Preservative: Sodium azide

Precaution of Use: This product contains Sodium azide: a POISONOUS AND HAZARDOUS SUBSTANCE which should be handled by trained staff only.

Storage: -20 °C

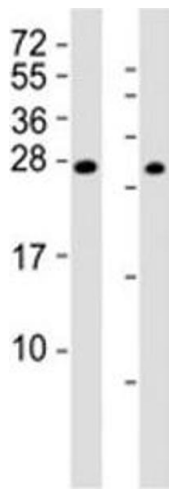
Storage Comment: Aliquot the RHOXF1 antibody and store frozen at -20°C or colder. Avoid repeated freeze-thaw cycles.

Images



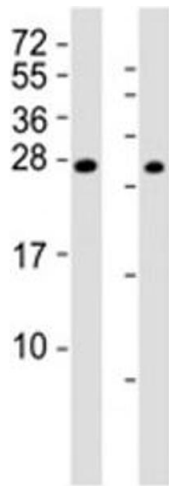
Western Blotting

Image 1. Western blot testing of RHOXF1 antibody at 1:1000; Lane 1: HL-60 whole lysate; Lane 2: human testis lysate. Predicted band size : 21 kDa



Western Blotting

Image 2. Western blot testing of RHOXF1 antibody at 1:2000; Lane 1: A2058 cell lysate, Lane 2: human ovary lysate. Predicted band size : 21 kDa



Western Blotting

Image 3. Western blot testing of RHOXF1 antibody at 1:2000