

Datasheet for ABIN3028983

anti-RPS6 antibody

10 Images

[Go to Product page](#)

Overview

Quantity:	0.4 mL
Target:	RPS6
Reactivity:	Human, Rat
Host:	Mouse
Clonality:	Monoclonal
Conjugate:	This RPS6 antibody is un-conjugated
Application:	Western Blotting (WB), ELISA, Immunohistochemistry (IHC), Immunofluorescence (IF), Flow Cytometry (FACS)

Product Details

Immunogen:	This RPS6 antibody was produced from a mouse immunized with RPS6 recombinant protein.
Clone:	981CT2-1-1
Isotype:	IgG1
Cross-Reactivity (Details):	Expected species reactivity: Mouse, Primate
Purification:	Purified

Target Details

Target:	RPS6
Alternative Name:	RPS6 (RPS6 Products)
Background:	May play an important role in controlling cell growth and proliferation through the selective

Target Details

translation of particular classes of mRNA.

UniProt: [P62753](#)

Pathways: [Carbohydrate Homeostasis](#), [Ribonucleoprotein Complex Subunit Organization](#), [Ribosome Assembly](#)

Application Details

Application Notes: Titration of the RPS6 antibody may be required due to differences in protocols and secondary/substrate sensitivity.\. Flow Cytometry: 1:25,Immunofluorescence: 1:25,IHC (Paraffin): 1:25,Western blot: 1:2000

Restrictions: For Research Use only

Handling

Format: Liquid

Buffer: In 1X PBS, pH 7.4, with 0.09 % sodium azide

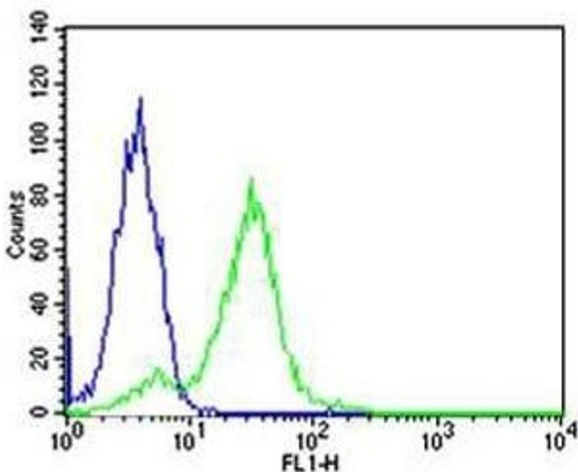
Preservative: Sodium azide

Precaution of Use: This product contains Sodium azide: a POISONOUS AND HAZARDOUS SUBSTANCE which should be handled by trained staff only.

Storage: -20 °C

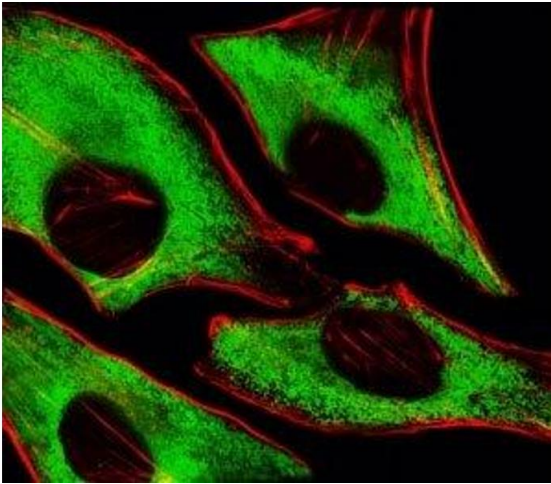
Storage Comment: Aliquot the RPS6 antibody and store frozen at -20°C or colder. Avoid repeated freeze-thaw cycles.

Images



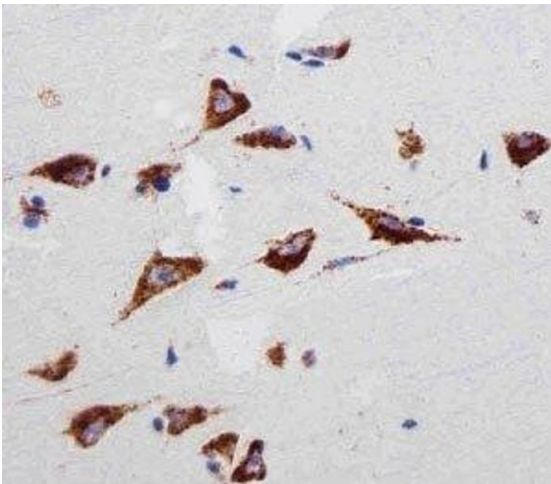
Flow Cytometry

Image 1. Flow cytometric analysis of HeLa cells using RPS6 antibody (green) and an isotype control of mouse IgG1 (blue); Ab was diluted at 1:25 dilution.



Immunofluorescence

Image 2. Fluorescent image of HeLa cells stained with RPS6 antibody at 1:25 dilution. An Alexa Fluor 488-conjugated goat anti-mouse IgG was used as the secondary Ab (green). Cytoplasmic actin was counterstained with Alexa Fluor 555 conjugated with Phalloidin (red)



Immunohistochemistry

Image 3. Immunohistochemical analysis of paraffin-embedded human brain section using RPS6 antibody at 1:25 dilution.

Please check the [product details page](#) for more images. Overall 10 images are available for ABIN3028983.