

Datasheet for ABIN3029005  
**anti-SERPINA9 antibody (AA 158-186)**



[Go to Product page](#)

2 Images

## Overview

Quantity:	0.4 mL
Target:	SERPINA9
Binding Specificity:	AA 158-186
Reactivity:	Human
Host:	Mouse
Clonality:	Monoclonal
Conjugate:	This SERPINA9 antibody is un-conjugated
Application:	Western Blotting (WB), ELISA

## Product Details

Immunogen:	A portion of amino acids 158-186 from the human protein was used as the immunogen for this GCET1/SERPINA9 antibody.
Clone:	136CT29-7-4
Isotype:	IgM kappa
Purification:	Purified

## Target Details

Target:	SERPINA9
Alternative Name:	GCET1 / SERPINA9 ( <a href="#">SERPINA9 Products</a> )
Background:	GCET1/SERPINA9 is a protease inhibitor that inhibits trypsin and trypsin-like serine proteases

## Target Details

(in vitro). Inhibits plasmin and thrombin with lower efficiency (in vitro).[UniProt]

UniProt: [Q86WD7](#)

## Application Details

Application Notes: Titration of the GCET1/SERPINA9 antibody may be required due to differences in protocols and secondary/substrate sensitivity.\. Western blot: 1:100-1:500

Restrictions: For Research Use only

## Handling

Format: Liquid

Buffer: In 1X PBS pH 7.4 with 0.09 % sodium azide

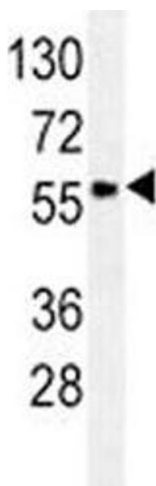
Preservative: Sodium azide

Precaution of Use: This product contains Sodium azide: a POISONOUS AND HAZARDOUS SUBSTANCE which should be handled by trained staff only.

Storage: -20 °C

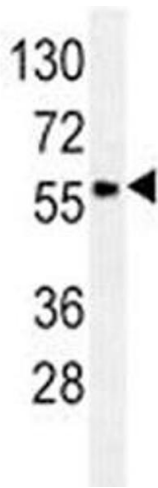
Storage Comment: Aliquot the GCET1/SERPINA9 antibody and store frozen at -20°C or colder. Avoid repeated freeze-thaw cycles.

## Images



### Western Blotting

**Image 1.** GCET1/SERPINA9 antibody western blot analysis in Ramos lysate.



### Western Blotting

**Image 2.** GCET1/SERPINA9 antibody western blot analysis in Ramos lysate.