

Datasheet for ABIN3029011  
**anti-SMAD9 antibody (AA 200-228)**[Go to Product page](#)

## 3 Images

## Overview

Quantity:	0.4 mL
Target:	SMAD9
Binding Specificity:	AA 200-228
Reactivity:	Human
Host:	Rabbit
Clonality:	Polyclonal
Conjugate:	This SMAD9 antibody is un-conjugated
Application:	Western Blotting (WB), ELISA, Immunofluorescence (IF)

## Product Details

Immunogen:	A portion of amino acids 200-228 from the human protein was used as the immunogen for this SMAD9 antibody.
Isotype:	Ig Fraction
Purification:	Antigen affinity purified

## Target Details

Target:	SMAD9
Alternative Name:	SMAD9 ( <a href="#">SMAD9 Products</a> )
Background:	The protein encoded by this gene is a member of the SMAD family, which transduces signals from TGF-beta family members. The encoded protein is activated by bone morphogenetic proteins and interacts with SMAD4. Two transcript variants encoding different isoforms have

## Target Details

been found for this gene.

UniProt: [O15198](#)

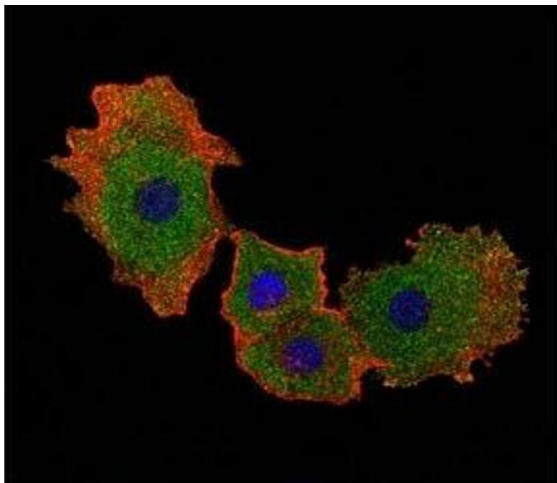
## Application Details

Application Notes:	Titration of the SMAD9 antibody may be required due to differences in protocols and secondary/substrate sensitivity.\. Western blot: 1:1000,Immunofluorescence: 1:10-1:50
Restrictions:	For Research Use only

## Handling

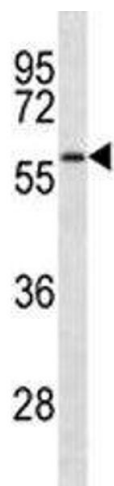
Format:	Liquid
Buffer:	In 1X PBS, pH 7.4, with 0.09 % sodium azide
Preservative:	Sodium azide
Precaution of Use:	This product contains Sodium azide: a POISONOUS AND HAZARDOUS SUBSTANCE which should be handled by trained staff only.
Storage:	-20 °C
Storage Comment:	Aliquot the SMAD9 antibody and store frozen at -20°C or colder. Avoid repeated freeze-thaw cycles.

## Images



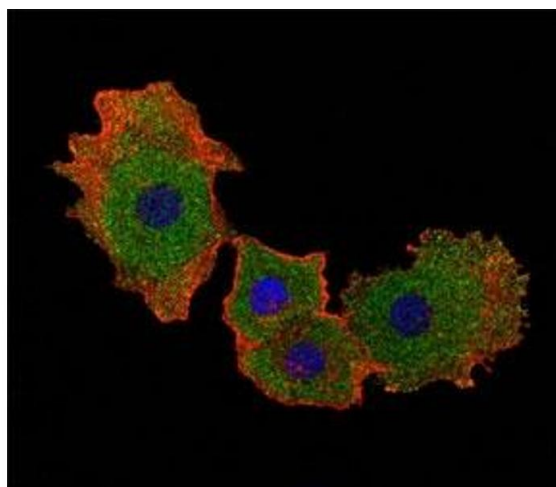
### Immunofluorescence

**Image 1.** Fluorescent confocal image of MCF-7 cell stained with SMAD9 antibody at 1:25. SMAD9 immunoreactivity is localized to the cytoplasm and nucleus.



#### Western Blotting

**Image 2.** SMAD9 antibody western blot analysis in A549 lysate.



#### Immunofluorescence

**Image 3.** Fluorescent confocal image of MCF-7 cell stained with SMAD9 antibody at 1:25. SMAD9 immunoreactivity is localized to the cytoplasm and nucleus.