

Datasheet for ABIN3029014
anti-SMAD5 antibody (AA 241-269)



[Go to Product page](#)

2 Images

Overview

| | |
|----------------------|--------------------------------------|
| Quantity: | 0.4 mL |
| Target: | SMAD5 |
| Binding Specificity: | AA 241-269 |
| Reactivity: | Human |
| Host: | Rabbit |
| Clonality: | Polyclonal |
| Conjugate: | This SMAD5 antibody is un-conjugated |
| Application: | Western Blotting (WB), ELISA |

Product Details

| | |
|-----------------------------|--|
| Immunogen: | A portion of amino acids 241-269 from the human protein was used as the immunogen for this SMAD5 antibody. |
| Isotype: | Ig Fraction |
| Cross-Reactivity (Details): | Expected species reactivity: Mouse, Rat |
| Purification: | Antigen affinity purified |

Target Details

| | |
|-------------------|--|
| Target: | SMAD5 |
| Alternative Name: | SMAD5 (SMAD5 Products) |
| Background: | Transcriptional modulator activated by BMP (bone morphogenetic proteins) type 1 receptor |

Target Details

| | |
|----------|--|
| | kinase. SMAD5 is a receptor-regulated SMAD (R-SMAD). |
| UniProt: | Q99717 |

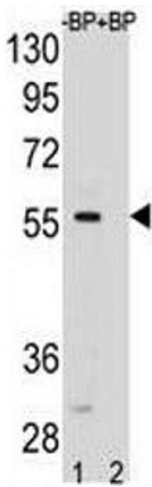
Application Details

| | |
|--------------------|---|
| Application Notes: | Titration of the SMAD5 antibody may be required due to differences in protocols and secondary/substrate sensitivity.\. Western blot: 1:1000 |
| Restrictions: | For Research Use only |

Handling

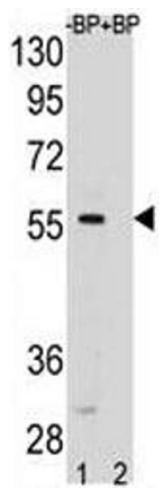
| | |
|--------------------|--|
| Format: | Liquid |
| Buffer: | In 1X PBS, pH 7.4, with 0.09 % sodium azide |
| Preservative: | Sodium azide |
| Precaution of Use: | This product contains Sodium azide: a POISONOUS AND HAZARDOUS SUBSTANCE which should be handled by trained staff only. |
| Storage: | -20 °C |
| Storage Comment: | Aliquot the SMAD5 antibody and store frozen at -20°C or colder. Avoid repeated freeze-thaw cycles. |

Images



Western Blotting

Image 1. SMAD5 antibody pre-incubated without (lane 1) and with (2) blocking peptide in HeLa lysate. Observed molecular weight: 52~60 kDa.



Western Blotting

Image 2. SMAD5 antibody pre-incubated without (lane 1) and with (2) blocking peptide in HeLa lysate. Observed molecular weight: 52~60 kDa.