

Datasheet for ABIN3029017

anti-SUMO3 antibody

2 Images

[Go to Product page](#)

Overview

Quantity:	0.4 mL
Target:	SUMO3
Reactivity:	Human
Host:	Mouse
Clonality:	Monoclonal
Application:	Western Blotting (WB), ELISA

Product Details

Immunogen:	Purified recombinant protein was used as immunogen for this SUMO3 antibody.
Clone:	76AT630-91-31
Isotype:	IgG1
Purification:	Purified

Target Details

Target:	SUMO3
Alternative Name:	SUMO3 (SUMO3 Products)
Background:	SUMO proteins, such as SUMO3, and ubiquitin posttranslationally modify numerous cellular proteins and affect their metabolism and function. However, unlike ubiquitination, which targets proteins for degradation, sumoylation participates in a number of cellular processes, such as nuclear transport, transcriptional regulation, apoptosis, and protein stability.
UniProt:	P55854

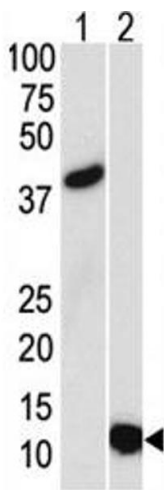
Application Details

Application Notes:	Titration of the SUMO3 antibody may be required due to differences in protocols and secondary/substrate sensitivity.\. Western blot: 1:100-1:500
Restrictions:	For Research Use only

Handling

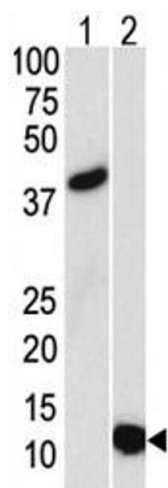
Format:	Liquid
Buffer:	In 1X PBS pH 7.4 with 0.09 % sodium azide
Preservative:	Sodium azide
Precaution of Use:	This product contains Sodium azide: a POISONOUS AND HAZARDOUS SUBSTANCE which should be handled by trained staff only.
Storage:	-20 °C
Storage Comment:	Aliquot the SUMO3 antibody and store frozen at -20°C or colder. Avoid repeated freeze-thaw cycles.

Images



Western Blotting

Image 1. Western blot analysis of SUMO3 antibody and (1) GST-SUMO3 recombinant protein and (2) HL-60 lysate.



Western Blotting

Image 2. Western blot analysis of SUMO3 antibody and (1) GST-SUMO3 recombinant protein and (2) HL-60 lysate.