

Datasheet for ABIN3029024  
**anti-SLC2A2 antibody (AA 31-60)**



[Go to Product page](#)

3 Images

## Overview

Quantity:	0.4 mL
Target:	SLC2A2
Binding Specificity:	AA 31-60
Reactivity:	Human
Host:	Rabbit
Clonality:	Polyclonal
Conjugate:	This SLC2A2 antibody is un-conjugated
Application:	Western Blotting (WB), ELISA, Flow Cytometry (FACS)

## Product Details

Immunogen:	A portion of amino acids 31-60 from the human protein was used as the immunogen for this GLUT2 antibody.
Isotype:	Ig Fraction
Purification:	Purified

## Target Details

Target:	SLC2A2
Alternative Name:	GLUT2 ( <a href="#">SLC2A2 Products</a> )
Background:	Glucose transporter 2 isoform is an integral plasma membrane glycoprotein of the liver, islet beta cells, intestine, and kidney epithelium. It mediates facilitated bidirectional glucose transport. Because of its low affinity for glucose, it has been suggested as a glucose sensor.

## Target Details

UniProt: [P11168](#)

Pathways: [Warburg Effect](#)

## Application Details

Application Notes: Titration of the GLUT2 antibody may be required due to differences in protocols and secondary/substrate sensitivity.\. Western blot: 1:1000,Flow Cytometry: 1:10-1:50

Restrictions: For Research Use only

## Handling

Format: Liquid

Buffer: In 1X PBS, pH 7.4, with 0.09 % sodium azide

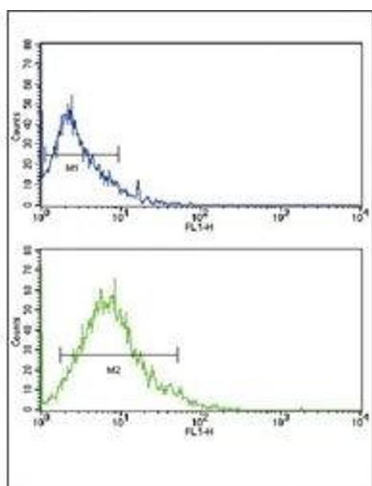
Preservative: Sodium azide

Precaution of Use: This product contains Sodium azide: a POISONOUS AND HAZARDOUS SUBSTANCE which should be handled by trained staff only.

Storage: -20 °C

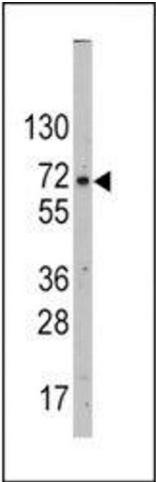
Storage Comment: Aliquot the GLUT2 antibody and store frozen at -20°C or colder. Avoid repeated freeze-thaw cycles.

## Images



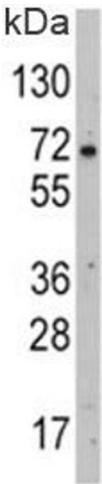
### Flow Cytometry

**Image 1.** Flow cytometric analysis of HL-60 cells using GLUT2 antibody (bottom histogram) compared to a negative control (top histogram). FITC-conjugated goat-anti-rabbit secondary Ab was used for the analysis.



Western Blotting

**Image 2.** Western blot analysis of GLUT2 antibody and HepG2 lysate.



Western Blotting

**Image 3.** Western blot analysis of GLUT2 antibody and HepG2 lysate.