

Datasheet for ABIN3029025  
**anti-Sonic Hedgehog antibody (AA 395-450)**



[Go to Product page](#)

3 Images

## Overview

Quantity:	0.4 mL
Target:	Sonic Hedgehog (SHH)
Binding Specificity:	AA 395-450
Reactivity:	Human, Mouse
Host:	Rabbit
Clonality:	Polyclonal
Conjugate:	This Sonic Hedgehog antibody is un-conjugated
Application:	Western Blotting (WB), ELISA, Flow Cytometry (FACS)

## Product Details

Immunogen:	A portion of amino acids 395-450 were used as immunogen for this Shh antibody.
Isotype:	Ig Fraction
Purification:	Antigen affinity purified

## Target Details

Target:	Sonic Hedgehog (SHH)
Alternative Name:	Shh ( <a href="#">SHH Products</a> )
Background:	Sonic hedgehog binds to the patched (PTC) receptor, which functions in association with smoothened (SMO), to activate the transcription of target genes. In the absence of SHH, PTC represses the constitutive signaling activity of SMO.

Target Details

UniProt:	Q62226
Pathways:	Hedgehog Signaling, Dopaminergic Neurogenesis, Regulation of Muscle Cell Differentiation, Tube Formation, Skeletal Muscle Fiber Development

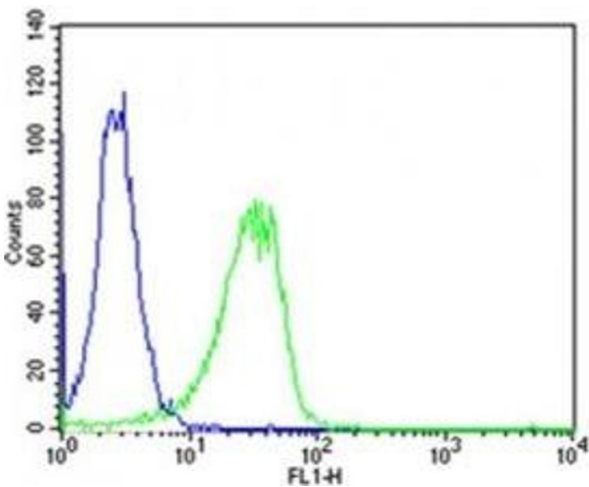
Application Details

Application Notes:	<p>Titration of the Shh antibody may be required due to differences in protocols and secondary/substrate sensitivity.</p> <p>1. The 45 kDa precursor protein autocleaves into 27 kDa amino and 19 kDa carboxy fragments.\. Flow Cytometry: 1:25,Western blot: 1:1000 (1)</p>
Restrictions:	For Research Use only

Handling

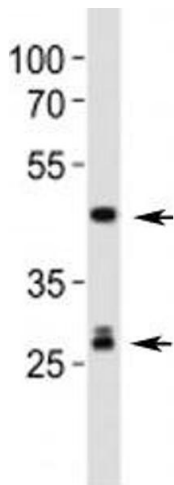
Format:	Liquid
Buffer:	In 1X PBS, pH 7.4, with 0.09 % sodium azide
Preservative:	Sodium azide
Precaution of Use:	This product contains Sodium azide: a POISONOUS AND HAZARDOUS SUBSTANCE which should be handled by trained staff only.
Storage:	-20 °C
Storage Comment:	Aliquot the Shh antibody and store frozen at -20°C or colder. Avoid repeated freeze-thaw cycles.

Images



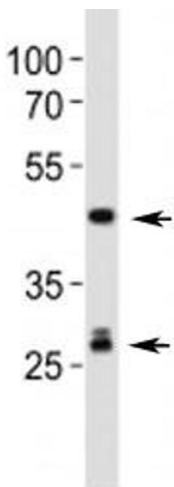
**Flow Cytometry**

**Image 1.** Flow cytometric analysis of HeLa cells using Shh antibody (green) compared to an isotype control of rabbit IgG (blue); Ab was diluted at 1:25 dilution. An Alexa Fluor 488 goat anti-rabbit IgG was used as t



Western Blotting

**Image 2.** Western blot analysis of lysate from mouse liver tissue lysate using Shh antibody. Predicted molecular weight: 45/27/19 kDa (1)



Western Blotting

**Image 3.** Western blot analysis of lysate from mouse liver tissue lysate using Shh antibody. Predicted molecular weight: 45/27/19 kDa (1)