

Datasheet for ABIN3029027
anti-SPHK2 antibody (N-Term)[Go to Product page](#)

2 Images

Overview

Quantity:	0.4 mL
Target:	SPHK2
Binding Specificity:	N-Term
Reactivity:	Human
Host:	Rabbit
Clonality:	Polyclonal
Conjugate:	This SPHK2 antibody is un-conjugated
Application:	Western Blotting (WB), ELISA

Product Details

Immunogen:	This SPHK2 antibody was produced from a rabbit immunized with a KLH conjugated synthetic peptide between 52-84 amino acids from the N-terminal region of human SPHK2.
Isotype:	Ig Fraction
Purification:	Antigen affinity purified

Target Details

Target:	SPHK2
Alternative Name:	SPHK2 (SPHK2 Products)
Background:	Catalyzes the phosphorylation of sphingosine to form sphingosine 1-phosphate (SPP), a lipid mediator with both intra- and extracellular functions. Also acts on D-erythro-dihydrosphingosine, D-erythro-sphingosine and L-threo-dihydrosphingosine. Binds

Target Details

phosphoinositides.

UniProt: [Q9NRA0](#)

Pathways: [VEGF Signaling](#)

Application Details

Application Notes: Titration of the SPHK2 antibody may be required due to differences in protocols and secondary/substrate sensitivity.\. Western blot: 1:1000-2000

Restrictions: For Research Use only

Handling

Format: Liquid

Buffer: In 1X PBS, pH 7.4, with 0.09 % sodium azide

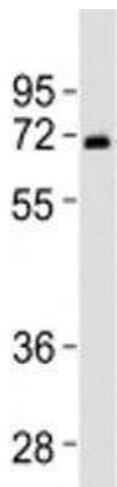
Preservative: Sodium azide

Precaution of Use: This product contains Sodium azide: a POISONOUS AND HAZARDOUS SUBSTANCE which should be handled by trained staff only.

Storage: -20 °C

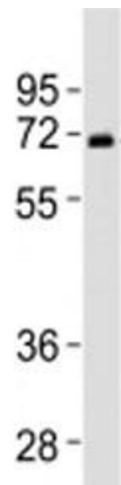
Storage Comment: Aliquot the SPHK2 antibody and store frozen at -20°C or colder. Avoid repeated freeze-thaw cycles.

Images



Western Blotting

Image 1. Western blot testing of SPHK2 antibody at 1:2000 dilution + human liver lysate



Western Blotting

Image 2. Western blot testing of SPHK2 antibody at 1:2000 dilution + human liver lysate