

Datasheet for ABIN3029029
anti-S1PR2 antibody (AA 272-298)[Go to Product page](#)

2 Images

Overview

Quantity:	0.4 mL
Target:	S1PR2
Binding Specificity:	AA 272-298
Reactivity:	Human
Host:	Rabbit
Clonality:	Polyclonal
Conjugate:	This S1PR2 antibody is un-conjugated
Application:	Western Blotting (WB), ELISA

Product Details

Immunogen:	A portion of amino acids 272-298 from the human protein was used as the immunogen for this S1PR2 antibody.
Isotype:	Ig Fraction
Cross-Reactivity (Details):	Expected species reactivity: Mouse, Rat
Purification:	Antigen affinity purified

Target Details

Target:	S1PR2
Alternative Name:	S1PR2 (S1PR2 Products)
Background:	This gene encodes a member of the G protein-coupled receptors, as well as the EDG family of

Target Details

	proteins. This protein participates in sphingosine 1-phosphate-induced cell proliferation, survival, and transcriptional activation
UniProt:	O95136
Pathways:	Synaptic Membrane

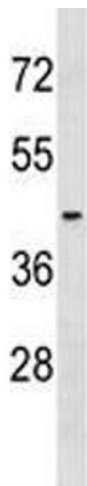
Application Details

Application Notes:	Titration of the S1PR2 antibody may be required due to differences in protocols and secondary/substrate sensitivity.\. Western blot: 1:1000
Restrictions:	For Research Use only

Handling

Format:	Liquid
Buffer:	In 1X PBS, pH 7.4, with 0.09 % sodium azide
Preservative:	Sodium azide
Precaution of Use:	This product contains Sodium azide: a POISONOUS AND HAZARDOUS SUBSTANCE which should be handled by trained staff only.
Storage:	-20 °C
Storage Comment:	Aliquot the S1PR2 antibody and store frozen at -20°C or colder. Avoid repeated freeze-thaw cycles.

Images



Western Blotting

Image 1. S1PR2 antibody western blot analysis in NCI-H292 lysate.



Western Blotting

Image 2. S1PR2 antibody western blot analysis in NCI-H292 lysate.