

Datasheet for ABIN3029032  
**anti-SSB antibody (AA 366-397)**[Go to Product page](#)

## 3 Images

## Overview

Quantity:	0.4 mL
Target:	SSB
Binding Specificity:	AA 366-397
Reactivity:	Human
Host:	Rabbit
Clonality:	Polyclonal
Conjugate:	This SSB antibody is un-conjugated
Application:	ELISA, Western Blotting (WB), Immunohistochemistry (IHC)

## Product Details

Immunogen:	A portion of amino acids 366-397 from the human protein was used as the immunogen for this SS-B antibody.
Isotype:	Ig Fraction
Cross-Reactivity (Details):	Expected species reactivity: Rabbit
Purification:	Purified

## Target Details

Target:	SSB
Alternative Name:	SSB ( <a href="#">SSB Products</a> )
Background:	SSB binds to the 3' poly(U) terminus of nascent RNA polymerase III transcripts, protecting them

## Target Details

from exonuclease digestion and facilitating their folding and maturation. [UniProt]

UniProt: [P05455](#)

## Application Details

Application Notes: Titration of the SS-B antibody may be required due to differences in protocols and secondary/substrate sensitivity.\. Western blot: 1:1000,IHC (Paraffin): 1:50-1:100

Restrictions: For Research Use only

## Handling

Format: Liquid

Buffer: In 1X PBS pH 7.4 with 0.09 % sodium azide

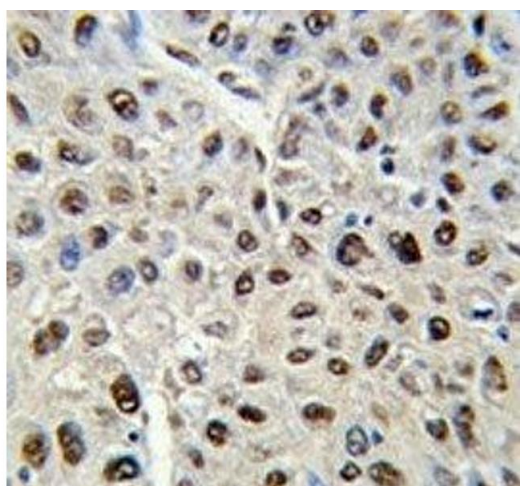
Preservative: Sodium azide

Precaution of Use: This product contains Sodium azide: a POISONOUS AND HAZARDOUS SUBSTANCE which should be handled by trained staff only.

Storage: -20 °C

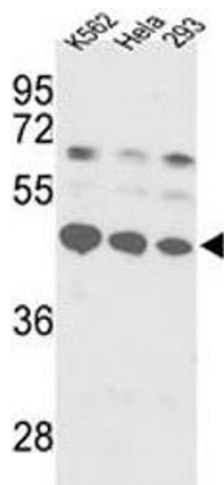
Storage Comment: Aliquot the SS-B antibody and store frozen at -20°C or colder. Avoid repeated freeze-thaw cycles.

## Images



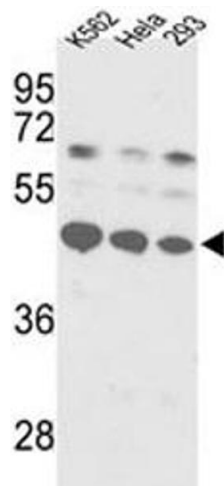
### Immunohistochemistry

**Image 1.** IHC analysis of FFPE human hepatocarcinoma stained with SS-B antibody



Western Blotting

**Image 2.** Western blot analysis of SS-B antibody and K562, HeLa, 293 lysate.



Western Blotting

**Image 3.** Western blot analysis of SS-B antibody and K562, HeLa, 293 lysate.