

Datasheet for ABIN3029037  
**anti-SOD3 antibody (AA 7-36)**

## 5 Images

[Go to Product page](#)

## Overview

Quantity:	0.4 mL
Target:	SOD3
Binding Specificity:	AA 7-36
Reactivity:	Human
Host:	Rabbit
Clonality:	Polyclonal
Conjugate:	This SOD3 antibody is un-conjugated
Application:	Western Blotting (WB), Immunohistochemistry (IHC), ELISA, Flow Cytometry (FACS)

## Product Details

Immunogen:	A portion of amino acids 7-36 from the human protein was used as the immunogen for this SOD3 antibody.
Isotype:	Ig Fraction
Purification:	Antigen affinity purified

## Target Details

Target:	SOD3
Alternative Name:	SOD3 ( <a href="#">SOD3 Products</a> )
Background:	SOD3 is a member of the superoxide dismutase(SOD) protein family. SODs are antioxidant enzymes that catalyze the dismutation of two superoxide radicals into hydrogen peroxide and oxygen. This protein is thought to protect the brain, lungs, and other tissues from oxidative

## Target Details

stress. The protein is secreted into the extracellular space and forms a glycosylated homotetramer that is anchored to the extracellular matrix (ECM) and cell surfaces through an interaction with heparan sulfate proteoglycan and collagen. A fraction of the protein is cleaved near the C-terminus before secretion to generate circulating tetramers that do not interact with the ECM.

UniProt: [P08294](#)

## Application Details

Application Notes: Titration of the SOD3 antibody may be required due to differences in protocols and secondary/substrate sensitivity.\. Western blot: 1:1000,IHC (Paraffin): 1:10-1:50,Flow Cytometry: 1:10-1:50

Restrictions: For Research Use only

## Handling

Format: Liquid

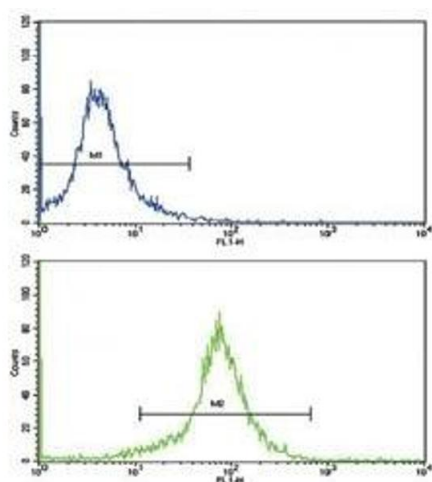
Buffer: In 1X PBS, pH 7.4, with 0.09 % sodium azide

Preservative: Sodium azide

Precaution of Use: This product contains Sodium azide: a POISONOUS AND HAZARDOUS SUBSTANCE which should be handled by trained staff only.

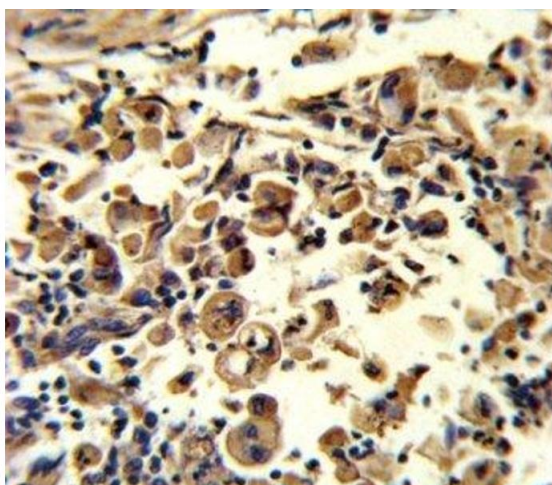
Storage: -20 °C

Storage Comment: Aliquot the SOD3 antibody and store frozen at -20°C or colder. Avoid repeated freeze-thaw cycles.



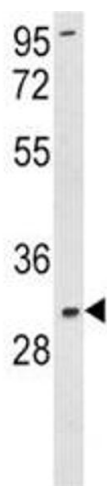
### Flow Cytometry

**Image 1.** Flow cytometric analysis of K562 cells using SOD3 antibody (green) compared to a negative control (blue). FITC-conjugated goat-anti-rabbit secondary Ab was used for the analysis.



### Immunohistochemistry

**Image 2.** IHC analysis of FFPE human lung carcinoma stained with SOD3 antibody



### Western Blotting

**Image 3.** Western blot analysis of SOD3 antibody and K562 lysate. Predicted molecular weight: 26~32 kDa.

Please check the [product details page](#) for more images. Overall 5 images are available for ABIN3029037.