

Datasheet for ABIN3029041  
**anti-SOCS1 antibody (C-Term)**



[Go to Product page](#)

3 Images

## Overview

Quantity:	100 µg
Target:	SOCS1
Binding Specificity:	C-Term
Reactivity:	Human, Mouse, Rat
Host:	Rabbit
Clonality:	Polyclonal
Conjugate:	This SOCS1 antibody is un-conjugated
Application:	Western Blotting (WB), Immunohistochemistry (Paraffin-embedded Sections) (IHC (p))

## Product Details

Immunogen:	An amino acid sequence from the C-terminus of human SOCS1 (NPVLRDYLSSFPFQI) was used as the immunogen for this SOCS1 antibody (100% homologous in human, mouse and rat).
Isotype:	IgG
Purification:	Antigen affinity

## Target Details

Target:	SOCS1
Alternative Name:	SOCS1 ( <a href="#">SOCS1 Products</a> )
Background:	Suppressor of cytokine signaling 1(SOCS1), also known as Jak-binding protein(JAB), is a negative regulator to a subset of protein-tyrosine kinases. This 211-amino acid protein has a molecular mass of about 23.5 kD. The TEC-binding region of SOCS1 resides in the N terminus.

## Target Details

---

SOCS1 associates with Tec and suppresses its kinase activity. The SOCS1 gene is intronless and is mapped to on chromosome 16p13.13. SOCS1 regulates the JAK/STAT signal-transduction pathway. Moreover, it contributes to protection against hepatic injury and fibrosis, and may also protect against hepatocarcinogenesis.

UniProt: [O15524](#)

Pathways: [JAK-STAT Signaling](#), [Interferon-gamma Pathway](#), [TLR Signaling](#), [Response to Growth Hormone Stimulus](#)

## Application Details

---

Application Notes: The stated application concentrations are suggested starting amounts. Titration of the SOCS1 antibody may be required due to differences in protocols and secondary/substrate sensitivity.\.  
Western blot: 0.5-1 µg/mL,IHC (Paraffin): 0.5-1 µg/mL

Restrictions: For Research Use only

## Handling

---

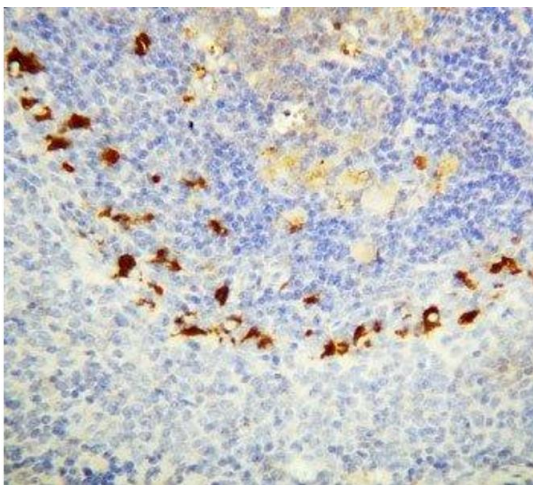
Buffer: 0.5 mg/mL if reconstituted with 0.2 mL sterile DI water

Storage: -20 °C

Storage Comment: After reconstitution, the SOCS1 antibody can be stored for up to one month at 4°C. For long-term, aliquot and store at -20°C. Avoid repeated freezing and thawing.

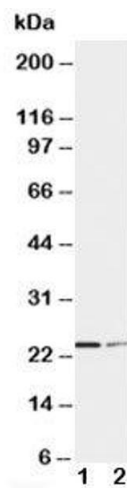
## Images

---



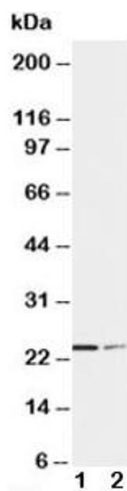
### Immunohistochemistry

**Image 1.** IHC-P: SOCS1 antibody testing of rat spleen tissue



#### Western Blotting

**Image 2.** Western blot testing of SOCS1 antibody and Lane 1: HT1080; 2: COLO320 cell lysate. Predicted molecular weight ~ 24 kDa.



#### Western Blotting

**Image 3.** Western blot testing of SOCS1 antibody and Lane 1: HT1080