



[Go to Product page](#)

Datasheet for ABIN3029042
anti-SOCS1 antibody (AA 35-66)

9 Images

Overview

Quantity:	0.4 mL
Target:	SOCS1
Binding Specificity:	AA 35-66
Reactivity:	Human, Mouse, Rat
Host:	Rabbit
Clonality:	Polyclonal
Conjugate:	This SOCS1 antibody is un-conjugated
Application:	Western Blotting (WB), ELISA, Immunohistochemistry (IHC), Immunofluorescence (IF), Flow Cytometry (FACS)

Product Details

Immunogen:	A portion of amino acids 35-66 from the human protein was used as the immunogen for this SOCS1 antibody.
Isotype:	Ig Fraction
Purification:	Purified

Target Details

Target:	SOCS1
Alternative Name:	SOCS1 (SOCS1 Products)
Background:	SOCS1 is a member of the STAT-induced STAT inhibitor (SSI), also known as suppressor of cytokine signaling(SOCS), family. SSI family members are cytokine-inducible negative

Target Details

regulators of cytokine signaling.

UniProt: [O15524](#)

Pathways: [JAK-STAT Signaling](#), [Interferon-gamma Pathway](#), [TLR Signaling](#), [Response to Growth Hormone Stimulus](#)

Application Details

Application Notes: Titration of the SOCS1 antibody may be required due to differences in protocols and secondary/substrate sensitivity.\. Western blot: 1:1000-2000,IHC (Paraffin): 1:10-1:50,Immunofluorescence: 1:10-1:50,Flow Cytometry: 1:10-1:50

Restrictions: For Research Use only

Handling

Format: Liquid

Buffer: In 1X PBS, pH 7.4, with 0.09 % sodium azide

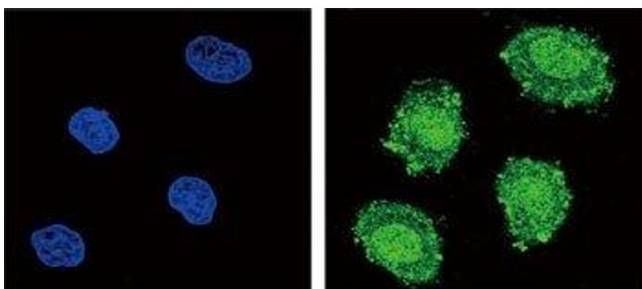
Preservative: Sodium azide

Precaution of Use: This product contains Sodium azide: a POISONOUS AND HAZARDOUS SUBSTANCE which should be handled by trained staff only.

Storage: -20 °C

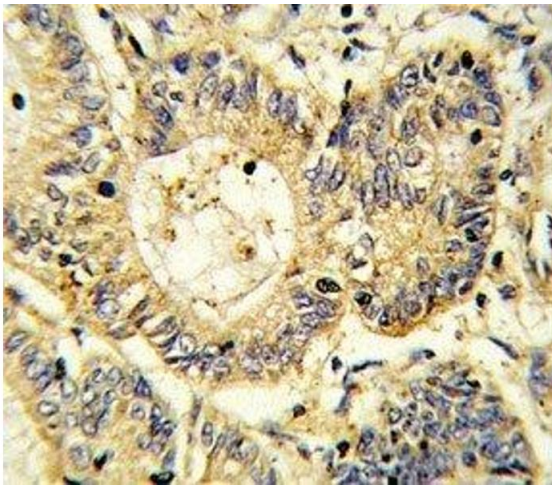
Storage Comment: Aliquot the SOCS1 antibody and store frozen at -20°C or colder. Avoid repeated freeze-thaw cycles.

Images



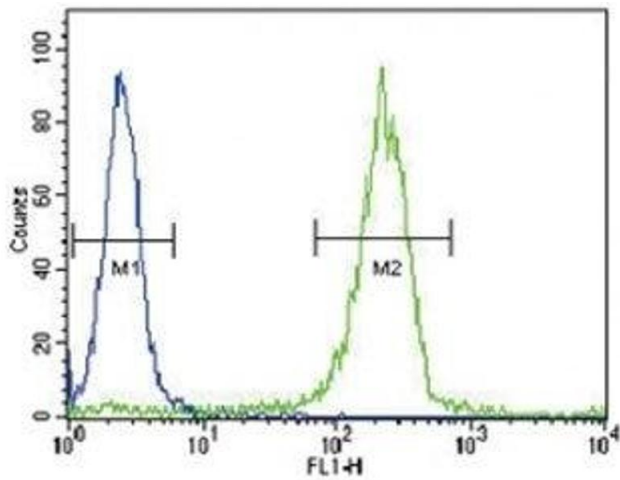
Immunofluorescence

Image 1. Confocal immunofluorescent analysis of SOCS1 antibody with 293 cells followed by Alexa Fluor 488-conjugated goat anti-rabbit IgG (green). DAPI was used as a nuclear counterstain (blue).



Immunohistochemistry

Image 2. IHC analysis of FFPE human colon carcinoma stained with SOCS1 antibody



Flow Cytometry

Image 3. SOCS1 antibody flow cytometric analysis of WiDr cells (green)

Please check the [product details page](#) for more images. Overall 9 images are available for ABIN3029042.