

Datasheet for ABIN3029048
anti-SOCS6 antibody (AA 40-69)

3 Images

[Go to Product page](#)

Overview

Quantity:	0.4 mL
Target:	SOCS6
Binding Specificity:	AA 40-69
Reactivity:	Human
Host:	Rabbit
Clonality:	Polyclonal
Conjugate:	This SOCS6 antibody is un-conjugated
Application:	Western Blotting (WB), Immunohistochemistry (IHC), ELISA

Product Details

Immunogen:	A portion of amino acids 40-69 from the human protein was used as the immunogen for this SOCS6 antibody.
Isotype:	Ig Fraction
Purification:	Antigen affinity purified

Target Details

Target:	SOCS6
Alternative Name:	SOCS6 (SOCS6 Products)
Background:	The protein encoded by this gene contains a SH2 domain and a CIS homolog domain. The protein thus belongs to the cytokine-induced STAT inhibitor (CIS), also known as suppressor of cytokine signaling (SOCS) or STAT-induced STAT inhibitor (SSI), protein family. CIS family

Target Details

members are known to be cytokine-inducible negative regulators of cytokine signaling. The expression of this gene can be induced by GM-CSF and EPO in hematopoietic cells. A high expression level of this gene was found in factor-independent chronic myelogenous leukemia (CML) and erythroleukemia (HEL) cell lines.

UniProt: [O14544](#)

Pathways: [JAK-STAT Signaling](#), [Carbohydrate Homeostasis](#)

Application Details

Application Notes: Titration of the SOCS6 antibody may be required due to differences in protocols and secondary/substrate sensitivity.\. Western blot: 1:1000,IHC (Paraffin): 1:10-1:50

Restrictions: For Research Use only

Handling

Format: Liquid

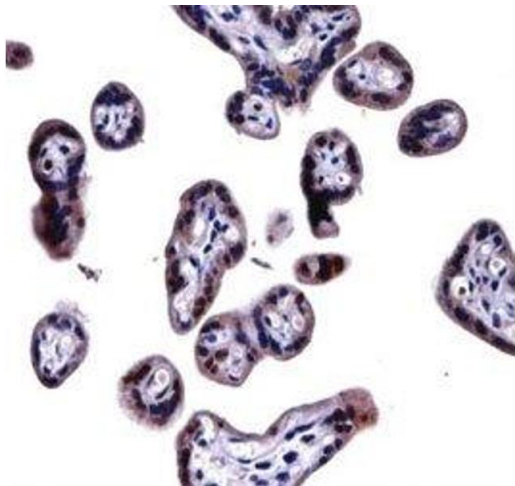
Buffer: In 1X PBS, pH 7.4, with 0.09 % sodium azide

Preservative: Sodium azide

Precaution of Use: This product contains Sodium azide: a POISONOUS AND HAZARDOUS SUBSTANCE which should be handled by trained staff only.

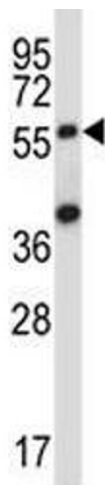
Storage: -20 °C

Storage Comment: Aliquot the SOCS6 antibody and store frozen at -20°C or colder. Avoid repeated freeze-thaw cycles.



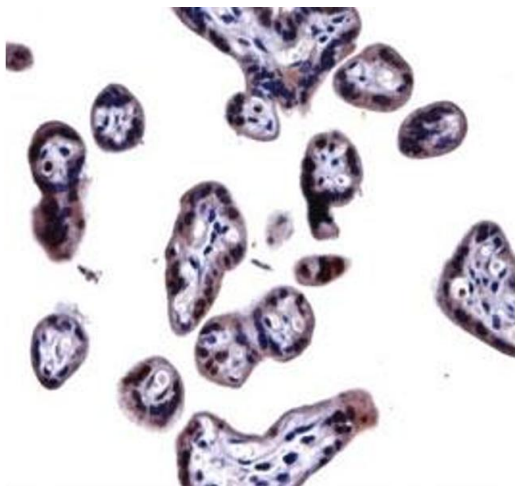
Immunohistochemistry

Image 1. SOCS6 antibody immunohistochemistry analysis in formalin fixed and paraffin embedded human placenta tissue.



Western Blotting

Image 2. SOCS6 antibody western blot analysis in 293 lysate.



Immunohistochemistry

Image 3. SOCS6 antibody immunohistochemistry analysis in formalin fixed and paraffin embedded human placenta tissue.