



[Go to Product page](#)

Datasheet for ABIN3029049  
**anti-SOCS7 antibody (AA 458-486)**

2 Images

Overview

Quantity:	0.4 mL
Target:	SOCS7
Binding Specificity:	AA 458-486
Reactivity:	Human
Host:	Rabbit
Clonality:	Polyclonal
Conjugate:	This SOCS7 antibody is un-conjugated
Application:	ELISA, Western Blotting (WB)

Product Details

Immunogen:	A portion of amino acids 458-486 from the human protein was used as the immunogen for this SOCS7 antibody.
Isotype:	Ig Fraction
Cross-Reactivity (Details):	Expected species reactivity: Mouse
Purification:	Antigen affinity purified

Target Details

Target:	SOCS7
Alternative Name:	SOCS7 ( <a href="#">SOCS7 Products</a> )
Background:	Regulates signaling cascades probably through protein ubiquitination and/or sequestration.

## Target Details

---

Functions in insulin signaling and glucose homeostasis through IRS1 ubiquitination and subsequent proteasomal degradation. Inhibits also prolactin, growth hormone and leptin signaling by preventing STAT3 and STAT5 activation, sequestering them in the cytoplasm and reducing their binding to DNA. May be a substrate recognition component of a SCF-like E3 ubiquitin-protein ligase complex which mediates the ubiquitination and subsequent proteasomal degradation of target proteins (By similarity).

UniProt: [014512](#)

## Application Details

---

Application Notes: Titration of the SOCS7 antibody may be required due to differences in protocols and secondary/substrate sensitivity.\. Western blot: 1:1000

Restrictions: For Research Use only

## Handling

---

Format: Liquid

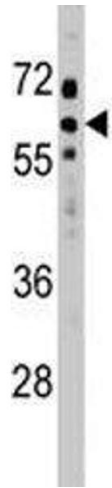
Buffer: In 1X PBS, pH 7.4, with 0.09 % sodium azide

Preservative: Sodium azide

Precaution of Use: This product contains Sodium azide: a POISONOUS AND HAZARDOUS SUBSTANCE which should be handled by trained staff only.

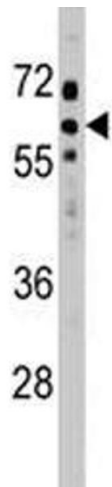
Storage: -20 °C

Storage Comment: Aliquot the SOCS7 antibody and store frozen at -20°C or colder. Avoid repeated freeze-thaw cycles.



#### Western Blotting

**Image 1.** SOCS7 antibody western blot analysis in HeLa lysate.



#### Western Blotting

**Image 2.** SOCS7 antibody western blot analysis in HeLa lysate.