

Datasheet for ABIN3029054

anti-SUV39H2 antibody (AA 360-390)

5 Images

[Go to Product page](#)

Overview

Quantity:	0.4 mL
Target:	SUV39H2
Binding Specificity:	AA 360-390
Reactivity:	Human, Rat
Host:	Rabbit
Clonality:	Polyclonal
Conjugate:	This SUV39H2 antibody is un-conjugated
Application:	Western Blotting (WB), ELISA, Immunohistochemistry (IHC)

Product Details

Immunogen:	A portion of amino acids 360-390 from the human protein was used as the immunogen for this SUV39H2 antibody.
Isotype:	Ig Fraction
Cross-Reactivity (Details):	Expected species reactivity: Primate
Purification:	Purified

Target Details

Target:	SUV39H2
Alternative Name:	SUV39H2 (SUV39H2 Products)
Background:	The murine gene Suv39h2 encodes an H3 histone methyltransferase (HMTase) 59 % identical

Target Details

in sequence to mouse Suv39h1. During embryogenesis, both proteins overlap in tissue expression, yet Suv39h2 transcripts are restricted to the testes in adult animals. Immunolocalization of the Suv39h2 protein during spermatogenesis indicates enrichment at the heterochromatin from the leptotene to the round spermatid stage. Moreover, Suv39h2 specifically accumulates with chromatin of the sex chromosomes, which undergo transcriptional silencing during the first meiotic prophase. Suv39h2 HMTase may also organize meiotic heterochromatin with the potential for epigenetic imprint to the male germline.

UniProt: [Q9H5I1](#)

Application Details

Application Notes: Titration of the SUV39H2 antibody may be required due to differences in protocols and secondary/substrate sensitivity.\. Western blot: 1:1000,IHC (Paraffin): 1:50-1:100

Restrictions: For Research Use only

Handling

Format: Liquid

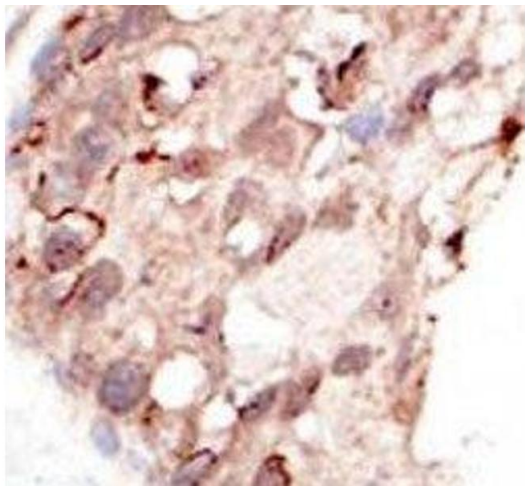
Buffer: In 1X PBS, pH 7.4, with 0.09 % sodium azide

Preservative: Sodium azide

Precaution of Use: This product contains Sodium azide: a POISONOUS AND HAZARDOUS SUBSTANCE which should be handled by trained staff only.

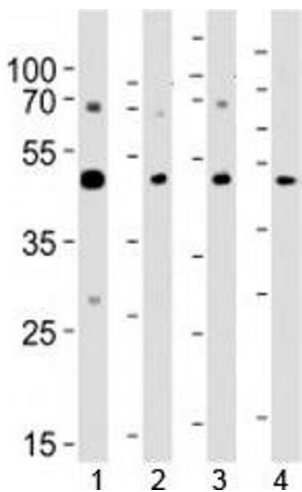
Storage: -20 °C

Storage Comment: Aliquot the SUV39H2 antibody and store frozen at -20°C or colder. Avoid repeated freeze-thaw cycles.



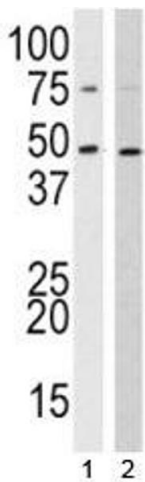
Immunohistochemistry

Image 1. IHC analysis of FFPE human breast carcinoma tissue stained with the SUV39H2 antibody



Western Blotting

Image 2. Western blot analysis of lysate from 1) A431, 2) K562, 3) CEM cell line and 4) rat brain tissue using SUV39H2 antibody at 1:1000.



Western Blotting

Image 3. Western blot analysis of SUV39H2 antibody and 1) 293, 2) HL-60 lysate

Please check the [product details page](#) for more images. Overall 5 images are available for ABIN3029054.