

Datasheet for ABIN3029055
anti-SUV39H2 antibody (AA 93-122)[Go to Product page](#)

5 Images

Overview

| | |
|----------------------|--|
| Quantity: | 0.4 mL |
| Target: | SUV39H2 |
| Binding Specificity: | AA 93-122 |
| Reactivity: | Human, Mouse |
| Host: | Rabbit |
| Clonality: | Polyclonal |
| Conjugate: | This SUV39H2 antibody is un-conjugated |
| Application: | Western Blotting (WB), ELISA, Immunohistochemistry (IHC) |

Product Details

| | |
|---------------|---|
| Immunogen: | A portion of amino acids 93-122 from the human protein was used as the immunogen for this KMT1B / SUV39H2 antibody. |
| Isotype: | Ig Fraction |
| Purification: | Purified |

Target Details

| | |
|-------------------|--|
| Target: | SUV39H2 |
| Alternative Name: | SUV39H2 (KMT1B) (SUV39H2 Products) |
| Background: | The murine gene Suv39h2/kmt1b encodes an H3 histone methyltransferase (HMTase) 59 % identical in sequence to mouse Suv39h1. During embryogenesis, both proteins overlap in tissue expression, yet Suv39h2 transcripts are restricted to the testes in adult animals. |

Target Details

Immunolocalization of the Suv39h2 protein during spermatogenesis indicates enrichment at the heterochromatin from the leptotene to the round spermatid stage. Moreover, Suv39h2 specifically accumulates with chromatin of the sex chromosomes, which undergo transcriptional silencing during the first meiotic prophase. Suv39h2 HMTase may also organize meiotic heterochromatin with the potential for epigenetic imprint to the male germline.

UniProt: [Q9H5I1](#)

Application Details

Application Notes: Titration of the SUV39H2 antibody may be required due to differences in protocols and secondary/substrate sensitivity.\. Western blot: 1:1000,IHC (Paraffin): 1:50-1:100

Restrictions: For Research Use only

Handling

Format: Liquid

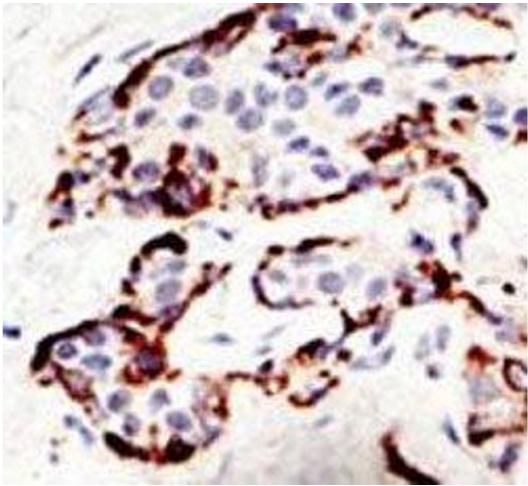
Buffer: In 1X PBS, pH 7.4, with 0.09 % sodium azide

Preservative: Sodium azide

Precaution of Use: This product contains Sodium azide: a POISONOUS AND HAZARDOUS SUBSTANCE which should be handled by trained staff only.

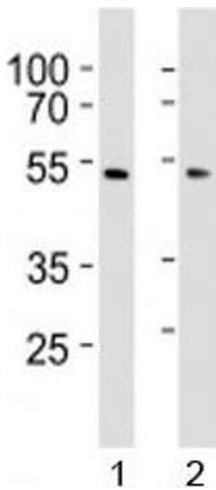
Storage: -20 °C

Storage Comment: Aliquot the SUV39H2 antibody and store frozen at -20°C or colder. Avoid repeated freeze-thaw cycles.



Immunohistochemistry

Image 1. IHC analysis of FFPE human breast carcinoma tissue stained with the SUV39H2 antibody



Western Blotting

Image 2. Western blot analysis of lysate from 1) HepG2 and 2) HUVEC cell line using SUV39H2 antibody at 1:1000.



Western Blotting

Image 3. Western blot testing of SUV39H2 antibody and mouse kidney tissue lysate

Please check the [product details page](#) for more images. Overall 5 images are available for ABIN3029055.