



[Go to Product page](#)

Datasheet for ABIN3029061

anti-Surfactant Protein A1 antibody (C-Term)

2 Images

Overview

Quantity:	100 µg
Target:	Surfactant Protein A1 (SFTPA1)
Binding Specificity:	C-Term
Reactivity:	Human, Rat
Host:	Rabbit
Clonality:	Polyclonal
Conjugate:	This Surfactant Protein A1 antibody is un-conjugated
Application:	Western Blotting (WB)

Product Details

Immunogen:	An amino acid sequence from the C-terminus of human SFTPA1 (KEQCVEMYTDGQWNR) was used as the immunogen for this SFTPA1 antibody.
Isotype:	IgG
Purification:	Antigen affinity

Target Details

Target:	Surfactant Protein A1 (SFTPA1)
Alternative Name:	SFTPA1 (SFTPA1 Products)
Background:	Surfactant protein A is an innate immune system collectin. The gene encoding SP-A map to mouse chromosome 14.1. Surfactant protein-A, which plays a role in innate host defense in the lung, is also expressed in the Eustachian tube. We report that the frequency of specific

Target Details

surfactant protein-A haplotypes and genotypes differs between children with recurrent otitis media compared with a control population.

UniProt: [Q8IWL2](#)

Application Details

Application Notes: The stated application concentrations are suggested starting amounts. Titration of the SFTPA1 antibody may be required due to differences in protocols and secondary/substrate sensitivity.\.
Western blot: 0.5-1 µg/mL

Restrictions: For Research Use only

Handling

Buffer: 0.2 mg/mL in 1X PBS with 50 % glycerol and 0.025 % sodium azide

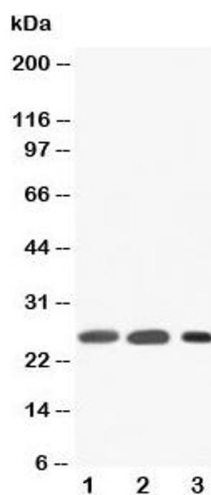
Preservative: Sodium azide

Precaution of Use: This product contains Sodium azide: a POISONOUS AND HAZARDOUS SUBSTANCE which should be handled by trained staff only.

Storage: -20 °C

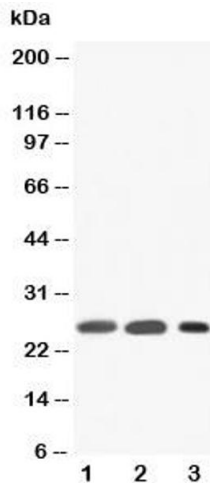
Storage Comment: Store the SFTPA1 antibody at -20°C.

Images



Western Blotting

Image 1. Western blot testing of SFTPA1 antibody and Lane 1: rat lung; 2: rat lung; 3: human Raji



Western Blotting

Image 2. Western blot testing of SFTPA1 antibody and Lane 1: rat lung