



Datasheet for ABIN3029081  
**anti-SYVN1 antibody (AA 58-88)**



[Go to Product page](#)

2 Images

### Overview

Quantity:	0.4 mL
Target:	SYVN1
Binding Specificity:	AA 58-88
Reactivity:	Human
Host:	Rabbit
Clonality:	Polyclonal
Conjugate:	This SYVN1 antibody is un-conjugated
Application:	Western Blotting (WB), ELISA

### Product Details

Immunogen:	A portion of amino acids 58-88 from the human protein was used as the immunogen for this HRD1 antibody.
Isotype:	Ig Fraction
Cross-Reactivity (Details):	Expected species reactivity: Mouse, Xenopus
Purification:	Purified

### Target Details

Target:	SYVN1
Alternative Name:	HRD1 ( <a href="#">SYVN1 Products</a> )
Background:	HRD1 is a ubiquitin ligase whose expression is induced by the unfolded protein response (UPR)

## Target Details

---

following endoplasmic reticulum stress. Expression of HRD1 protects cells from apoptosis by inducing degradation of abnormally processed proteins that accumulate in the endoplasmic reticulum. HRD1 is expressed in many tissues, strongly expressed in brain, pancreas, liver, kidney and skeletal muscle. Synoviolin/Hrd1 (expressed in rheumatoid synovium) is reported to be a novel causative factor for arthropathy by triggering synovial cell outgrowth through its antiapoptotic effects. HRD1 contains one ring-type zinc finger.

UniProt: [Q86TM6](#)

Pathways: [ER-Nucleus Signaling](#), [Negative Regulation of intrinsic apoptotic Signaling](#)

## Application Details

---

Application Notes: Titration of the HRD1 antibody may be required due to differences in protocols and secondary/substrate sensitivity.\. Western blot: 1:1000

Restrictions: For Research Use only

## Handling

---

Format: Liquid

Buffer: In 1X PBS pH 7.4 with 0.09 % sodium azide

Preservative: Sodium azide

Precaution of Use: This product contains Sodium azide: a POISONOUS AND HAZARDOUS SUBSTANCE which should be handled by trained staff only.

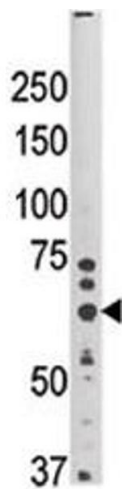
Storage: -20 °C

Storage Comment: Aliquot the HRD1 antibody and store frozen at -20°C or colder. Avoid repeated freeze-thaw cycles.



#### Western Blotting

**Image 1.** Western blot analysis of HRD1 antibody and mouse brain tissue lysate.



#### Western Blotting

**Image 2.** Western blot analysis of HRD1 antibody and mouse brain tissue lysate.