

Datasheet for ABIN3029101
anti-DR1 antibody (AA 83-112)[Go to Product page](#)

2 Images

Overview

Quantity:	0.4 mL
Target:	DR1
Binding Specificity:	AA 83-112
Reactivity:	Human, Mouse
Host:	Rabbit
Clonality:	Polyclonal
Conjugate:	This DR1 antibody is un-conjugated
Application:	Western Blotting (WB), ELISA

Product Details

Immunogen:	A portion of amino acids 83-112 from the human protein was used as the immunogen for this DR1 antibody.
Isotype:	Ig Fraction
Cross-Reactivity (Details):	Expected species reactivity: Rat, Chicken
Purification:	Antigen affinity purified

Target Details

Target:	DR1
Alternative Name:	DR1 (Down-Regulator of Transcription 1) (DR1 Products)
Background:	This gene encodes a TBP- (TATA box-binding protein) associated phosphoprotein that

Target Details

represses both basal and activated levels of transcription. The encoded protein is phosphorylated in vivo and this phosphorylation affects its interaction with TBP. This protein contains a histone fold motif at the amino terminus, a TBP-binding domain, and a glutamine- and alanine-rich region. The binding of DR1 repressor complexes to TBP-promoter complexes may establish a mechanism in which an altered DNA conformation, together with the formation of higher order complexes, inhibits the assembly of the preinitiation complex and controls the rate of RNA polymerase II transcription.

UniProt: [Q01658](#)

Application Details

Application Notes: Titration of the DR1 antibody may be required due to differences in protocols and secondary/substrate sensitivity.\. Western blot: 1:1000

Restrictions: For Research Use only

Handling

Format: Liquid

Buffer: In 1X PBS, pH 7.4, with 0.09 % sodium azide

Preservative: Sodium azide

Precaution of Use: This product contains Sodium azide: a POISONOUS AND HAZARDOUS SUBSTANCE which should be handled by trained staff only.

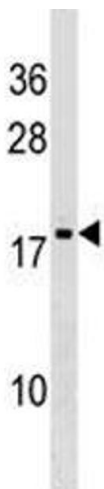
Storage: -20 °C

Storage Comment: Aliquot the DR1 antibody and store frozen at -20°C or colder. Avoid repeated freeze-thaw cycles.



Western Blotting

Image 1. DR1 antibody western blot analysis in K562 lysate



Western Blotting

Image 2. DR1 antibody western blot analysis in K562 lysate