

Datasheet for ABIN3029108
anti-TERT antibody (AA 627-656)[Go to Product page](#)

5 Images

Overview

Quantity:	0.4 mL
Target:	TERT
Binding Specificity:	AA 627-656
Reactivity:	Human
Host:	Rabbit
Clonality:	Polyclonal
Conjugate:	This TERT antibody is un-conjugated
Application:	ELISA, Western Blotting (WB), Flow Cytometry (FACS), Immunofluorescence (IF)

Product Details

Immunogen:	A portion of amino acids 627-656 from the human protein was used as the immunogen for this TERT antibody.
Isotype:	Ig Fraction
Purification:	Purified

Target Details

Target:	TERT
Alternative Name:	TERT (TERT Products)
Background:	Telomerase is a ribonucleoprotein polymerase that maintains telomere ends by addition of the telomere repeat TTAGGG. The enzyme consists of a protein component with reverse transcriptase activity, encoded by this gene, and an RNA component which serves as a

Target Details

template for the telomere repeat. Telomerase expression plays a role in cellular senescence, as it is normally repressed in postnatal somatic cells resulting in progressive shortening of telomeres. Deregulation of telomerase expression in somatic cells may be involved in oncogenesis. Studies in mouse suggest that telomerase also participates in chromosomal repair, since de novo synthesis of telomere repeats may occur at double-stranded breaks.

UniProt: [O14746](#)

Pathways: [Telomere Maintenance](#)

Application Details

Application Notes: Titration of the TERT antibody may be required due to differences in protocols and secondary/substrate sensitivity.\. Western blot: 1:1000,Flow Cytometry: 1:10-1:50,Immunofluorescence: 1:10-1:200

Restrictions: For Research Use only

Handling

Format: Liquid

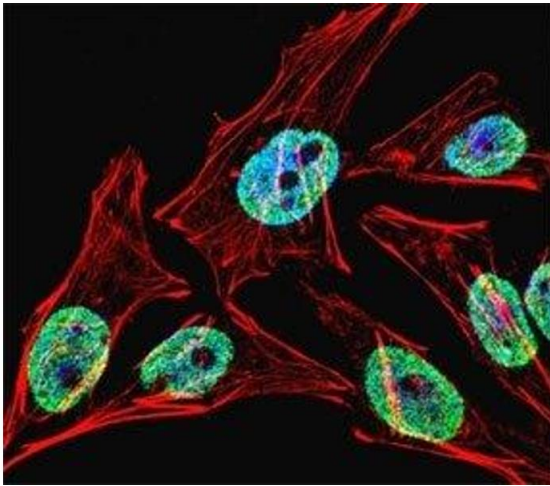
Buffer: In 1X PBS, pH 7.4, with 0.09 % sodium azide

Preservative: Sodium azide

Precaution of Use: This product contains Sodium azide: a POISONOUS AND HAZARDOUS SUBSTANCE which should be handled by trained staff only.

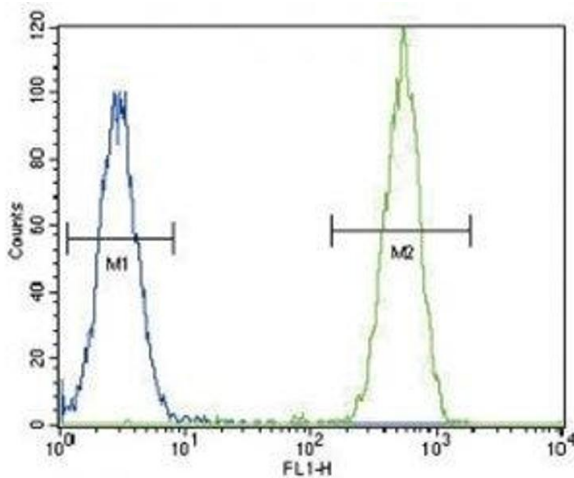
Storage: -20 °C

Storage Comment: Aliquot the TERT antibody and store frozen at -20°C or colder. Avoid repeated freeze-thaw cycles.



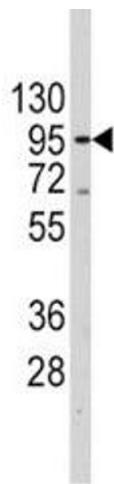
Immunofluorescence

Image 1. Fluorescent confocal image of HeLa cell stained with TERT antibody at 1:25. Immunoreactivity is localized to the nucleus strongly and cytoplasm weakly.



Flow Cytometry

Image 2. TERT antibody flow cytometric analysis of HeLa cells (green) compared to a negative control (blue). FITC-conjugated goat-anti-rabbit secondary Ab was used for the analysis.



Western Blotting

Image 3. Western blot analysis of TERT antibody and Jurkat lysate. Predicted molecular weight: 89-126 kDa (four isoforms can be visualized).

Please check the [product details page](#) for more images. Overall 5 images are available for ABIN3029108.