



[Go to Product page](#)

Datasheet for ABIN3029164
anti-TLR2 antibody (AA 212-242)

5 Images

Overview

Quantity:	0.4 mL
Target:	TLR2
Binding Specificity:	AA 212-242
Reactivity:	Human
Host:	Rabbit
Clonality:	Polyclonal
Conjugate:	This TLR2 antibody is un-conjugated
Application:	Western Blotting (WB), Immunohistochemistry (IHC), Flow Cytometry (FACS), ELISA

Product Details

Immunogen:	A portion of amino acids 212-242 from the human protein was used as the immunogen for this TLR2 antibody.
Isotype:	Ig Fraction
Cross-Reactivity (Details):	Expected species reactivity: Primate
Purification:	Purified

Target Details

Target:	TLR2
Alternative Name:	TLR2 (TLR2 Products)
Background:	TLR2 cooperates with LY96 to mediate the innate immune response to bacterial lipoproteins

Target Details

and other microbial cell wall components. Cooperates with TLR1 or TLR6 to mediate the innate immune response to bacterial lipoproteins or lipopeptides. Acts via MYD88 and TRAF6, leading to NF-kappa-B activation, cytokine secretion and the inflammatory response. May also promote apoptosis in response to lipoproteins. Recognizes mycoplasmal macrophage-activating lipopeptide-2kD (MALP-2), soluble tuberculosis factor (STF), phenol-soluble modulins (PSM) and B.burgdorferi outer surface protein A lipoprotein (OspA-L) cooperatively with TLR6. [UniProt]

UniProt: [O60603](#)

Pathways: [TLR Signaling](#), [Activation of Innate immune Response](#), [Cellular Response to Molecule of Bacterial Origin](#), [Positive Regulation of Immune Effector Process](#), [Production of Molecular Mediator of Immune Response](#), [Toll-Like Receptors Cascades](#)

Application Details

Application Notes: Titration of the TLR2 antibody may be required due to differences in protocols and secondary/substrate sensitivity. \. Western blot: 1:1000,IHC (Paraffin): 1:10-1:50,Flow Cytometry: 1:10-1:50

Restrictions: For Research Use only

Handling

Format: Liquid

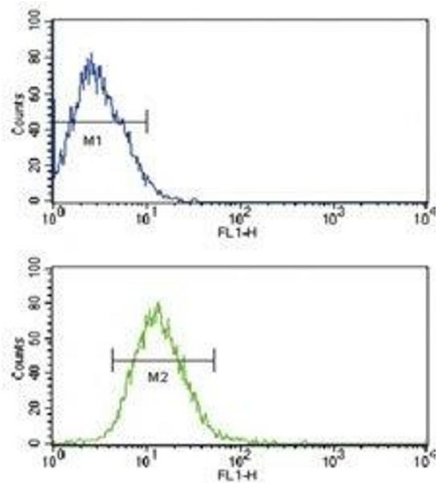
Buffer: In 1X PBS pH 7.4 with 0.09 % sodium azide

Preservative: Sodium azide

Precaution of Use: This product contains Sodium azide: a POISONOUS AND HAZARDOUS SUBSTANCE which should be handled by trained staff only.

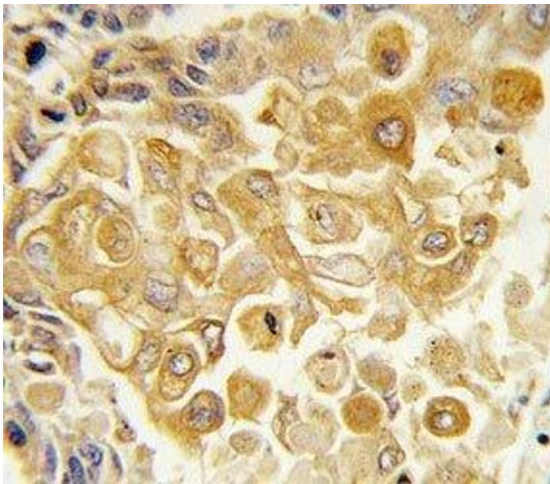
Storage: -20 °C

Storage Comment: Aliquot the TLR2 antibody and store frozen at -20°C or colder. Avoid repeated freeze-thaw cycles.



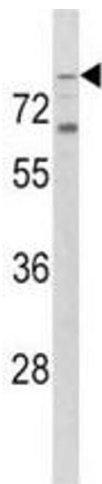
Flow Cytometry

Image 1. Flow cytometric analysis of CEM cells using TLR2 antibody (bottom histogram) compared to a negative control (top histogram). FITC-conjugated goat-anti-rabbit secondary Ab was used for the analysis.



Immunohistochemistry

Image 2. IHC analysis of FFPE human lung carcinoma tissue stained with TLR2 antibody



Western Blotting

Image 3. Western blot analysis of TLR2 antibody and K562 lysate.

Please check the [product details page](#) for more images. Overall 5 images are available for ABIN3029164.