



[Go to Product page](#)

Datasheet for ABIN3029165
anti-TLR2 antibody (AA 720-749)

5 Images

Overview

Quantity:	0.4 mL
Target:	TLR2
Binding Specificity:	AA 720-749
Reactivity:	Human, Mouse
Host:	Rabbit
Clonality:	Polyclonal
Conjugate:	This TLR2 antibody is un-conjugated
Application:	Western Blotting (WB), Immunohistochemistry (IHC), ELISA

Product Details

Immunogen:	A portion of amino acids 720-749 from the mouse protein was used as the immunogen for this anti-TLR2 antibody.
Isotype:	Ig Fraction
Purification:	Purified

Target Details

Target:	TLR2
Alternative Name:	TLR2 (TLR2 Products)
Background:	TLR2 is a member of the Toll-like receptor (TLR) family which plays a fundamental role in pathogen recognition and activation of innate immunity. TLRs are highly conserved from Drosophila to humans and share structural and functional similarities. They recognize

Target Details

pathogen-associated molecular patterns (PAMPs) that are expressed on infectious agents, and mediate the production of cytokines necessary for the development of effective immunity. The various TLRs exhibit different patterns of expression. TLR2 is expressed most abundantly in peripheral blood leukocytes, and mediates host response to Gram-positive bacteria and yeast via stimulation of NF-kappaB.

UniProt: [Q9QUN7](#)

Pathways: [TLR Signaling](#), [Activation of Innate immune Response](#), [Cellular Response to Molecule of Bacterial Origin](#), [Positive Regulation of Immune Effector Process](#), [Production of Molecular Mediator of Immune Response](#), [Toll-Like Receptors Cascades](#)

Application Details

Application Notes: Titration of the anti-TLR2 antibody may be required due to differences in protocols and secondary/substrate sensitivity.\. Western blot: 1:1000,IHC (Paraffin): 1:50-1:100

Restrictions: For Research Use only

Handling

Format: Liquid

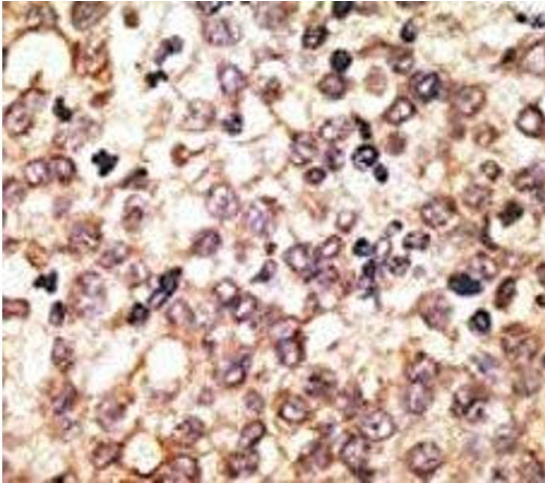
Buffer: In 1X PBS pH 7.4 with 0.09 % sodium azide

Preservative: Sodium azide

Precaution of Use: This product contains Sodium azide: a POISONOUS AND HAZARDOUS SUBSTANCE which should be handled by trained staff only.

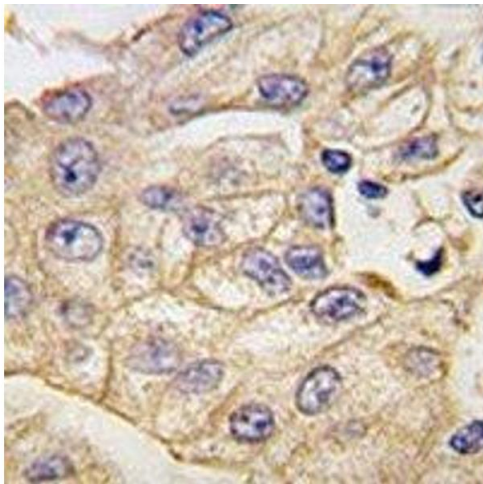
Storage: -20 °C

Storage Comment: Aliquot the anti-TLR2 antibody and store frozen at -20°C or colder. Avoid repeated freeze-thaw cycles.



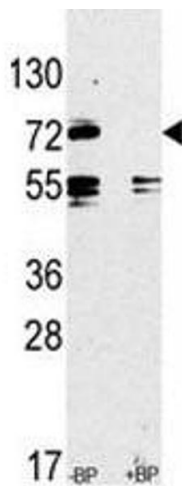
Immunohistochemistry

Image 1. IHC analysis of FFPE human hepatocarcinoma tissue stained with the anti-TLR2 antibody



Immunohistochemistry

Image 2. IHC analysis of FFPE human lung carcinoma tissue stained with anti-TLR2 antibody



Western Blotting

Image 3. Western blot analysis of anti-TLR2 antibody pre-incubated without and with blocking peptide in CEM lysate

Please check the [product details page](#) for more images. Overall 5 images are available for ABIN3029165.