



Datasheet for ABIN3029166

anti-TLR3 antibody



[Go to Product page](#)

3 Images

Overview

| | |
|--------------|--|
| Quantity: | 0.4 mL |
| Target: | TLR3 |
| Reactivity: | Human |
| Host: | Rabbit |
| Clonality: | Polyclonal |
| Conjugate: | This TLR3 antibody is un-conjugated |
| Application: | Western Blotting (WB), Immunohistochemistry (IHC), ELISA |

Product Details

| | |
|---------------|---|
| Immunogen: | This TLR3 antibody was produced from rabbits immunized with TLR3 recombinant protein. |
| Isotype: | Ig Fraction |
| Purification: | Antigen affinity purified |

Target Details

| | |
|-------------------|---|
| Target: | TLR3 |
| Alternative Name: | TLR3 (TLR3 Products) |
| Background: | The protein encoded by this gene is a member of the Toll-like receptor (TLR) family which plays a fundamental role in pathogen recognition and activation of innate immunity. TLRs are highly conserved from Drosophila to humans and share structural and functional similarities. They recognize pathogen-associated molecular patterns (PAMPs) that are expressed on infectious agents, and mediate the production of cytokines necessary for the development of effective |

Target Details

immunity. The various TLRs exhibit different patterns of expression. This receptor is most abundantly expressed in placenta and pancreas, and is restricted to the dendritic subpopulation of the leukocytes. It recognizes dsRNA associated with viral infection, and induces the activation of NF-kappaB and the production of type I interferons. It may thus play a role in host defense against viruses. Use of alternative polyadenylation sites to generate different length transcripts has been noted for this gene.

UniProt: [O15455](#)

Pathways: [TLR Signaling](#), [Activation of Innate immune Response](#), [Hepatitis C](#), [Toll-Like Receptors Cascades](#)

Application Details

Application Notes: Titration of the TLR3 antibody may be required due to differences in protocols and secondary/substrate sensitivity.\. Western blot: 1:1000,IHC (Paraffin): 1:50-1:100

Restrictions: For Research Use only

Handling

Format: Liquid

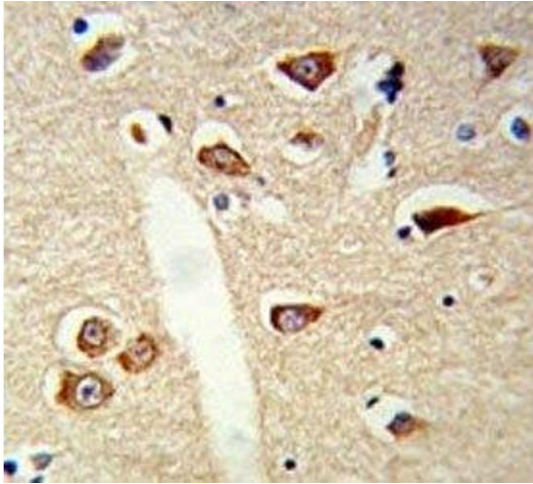
Buffer: In 1X PBS pH 7.4 with 0.09 % sodium azide

Preservative: Sodium azide

Precaution of Use: This product contains Sodium azide: a POISONOUS AND HAZARDOUS SUBSTANCE which should be handled by trained staff only.

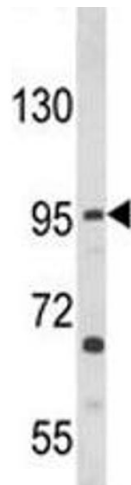
Storage: -20 °C

Storage Comment: Aliquot the TLR3 antibody and store frozen at -20°C or colder. Avoid repeated freeze-thaw cycles.



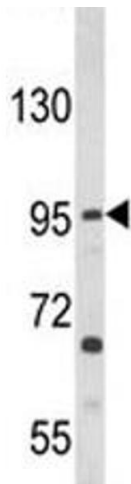
Immunohistochemistry

Image 1. IHC analysis of FFPE mouse brain tissue stained with TLR3 antibody



Western Blotting

Image 2. Western blot analysis of TLR3 antibody and HL-60 lysate.



Western Blotting

Image 3. Western blot analysis of TLR3 antibody and HL-60 lysate.